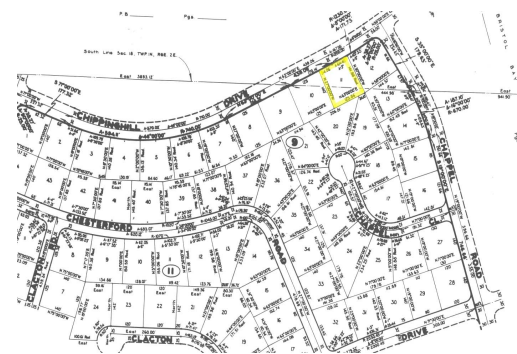
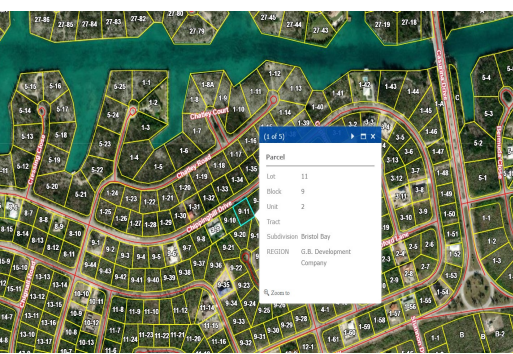
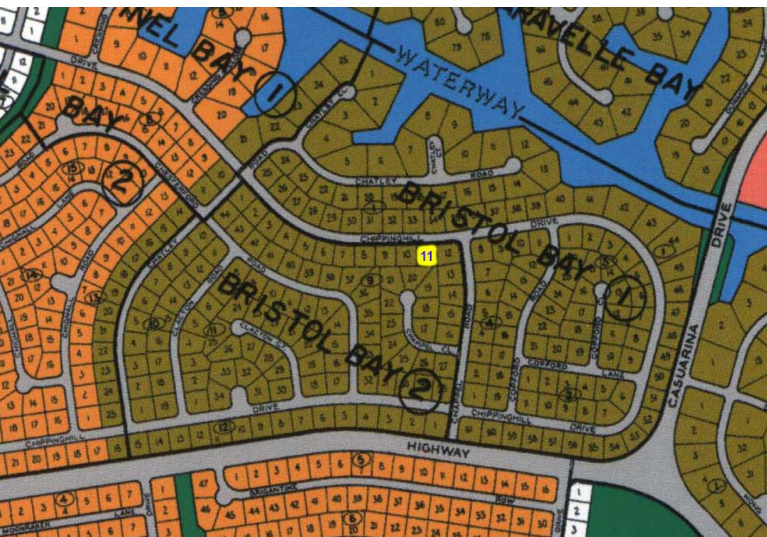


The High-Rise Multifamily Development Opportunity in Bristol



Seize the opportunity to develop in Bristol Bay's sought-after Chippinghill Drive! This 17,145...

Seize the opportunity to develop in Bristol Bay's sought-after Chippinghill Drive! This 17,145 sq. ft. (0.39-acre) lot is zoned for high-rise multifamily, making it an ideal location for an upscale residential development, investment property, or luxury condos.

Property Highlights:

Zoned for High-Rise Multifamily â€“ Perfect for maximizing investment potential

Prime Location in Bristol Bay â€“ A thriving and desirable area

17,145 sq. ft. / 0.39 Acres â€“ Ample space for a variety of development options

Great Investment Opportunity â€“ Strong potential for high returns

With its prime location and high-density zoning, this property is an excellent choice for developers looking to create a landmark residential project.

Don't miss this rare ...read more on our website.

Lot Size: 0.39

Living Area: 17,145

Subdivision: Bristol Bay



Ina Simmons

Phone: 242-727-0707

inasimmons@gmail.com



\$45,000 ID# 1070145 [View Online](#)
www.sarlesrealty.com