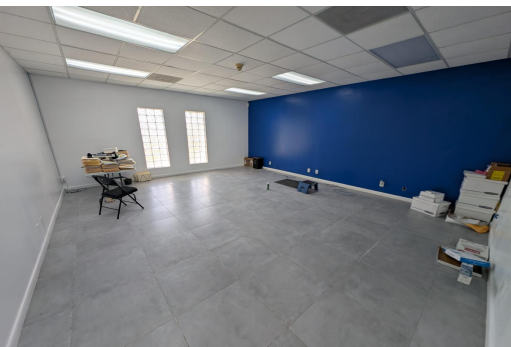


Hourly Company Prime Commercial Opportunity on West Settlers Way



Positioned in a high-visibility location on West Settlers Way, this versatile commercial property...

Positioned in a high-visibility location on West Settlers Way, this versatile commercial property offers a fantastic opportunity for business owners and investors alike. The building spans 3,200 square feet of well-designed space, ideal for a variety of commercial uses—from retail and office space to service-based businesses.

Situated on a generous 14,850 square foot lot, the property provides ample room for parking, potential expansion, or outdoor usage depending on your business needs. Its strategic location ensures excellent accessibility and exposure, making it a standout investment in a growing area.

Bedrooms: 1
Bathrooms: 1
Living Area: 3200
Subdivision: Civic
Industrial Area
Features: Appliances Only



Tiffany Smith

Phone:

kekris4@gmail.com



\$620,000 ID# 1070135 [View Online](#)
www.sarlesrealty.com