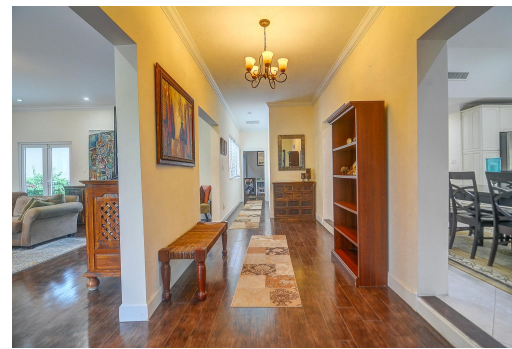


WINTON TERRACE, Winton, New Providence/Paradise Island



This Single family home is nestled among mature fruit and palm trees in the affluent community of...

This Single family home is nestled among mature fruit and palm trees in the affluent community of Winton Estates. Beach access is within a short distance and the neighbourhood is quiet, with neighbours represented by persons of a professional demographic. The main house is comprised of four (4) bedrooms and three and one-half (3.5) bathrooms on a spacious lot, just under an acre. The master bedroom suite boasts of an expansive master bathroom, walk in closet, private office and treadmill room. The main house also includes a dining room, living room, entertainment room and utility room and measures 4,807 square feet. The two-storey cottage provides two additional bathrooms and sleeping accommodations comprising 640 square feet. There is an outdoor patio, patio house, outdoor bar and grill a...read more on our website.

Bedrooms: 5
Bathrooms: 4
Lot Size: 34912
Subdivision: Winton
Features: Additional
Accom., Adult Oriented,
Can Be Rented, Family
Oriented, Fully Walled,
Furnished, Garden Area,
Landscaped, Pets
Allowed, Phone to Lot,
Private Setting, Quiet
Area, Recreation Nearby,
Road - Paved, Roll Down
Shutters, Security
System, Shopping
Nearby, Swimming Pool

WINTON TERRACE, Winton,
New Providence/Paradise Island
Phone:



\$1,200,000 ID# M60795 [View Online](#)
www.sarlesrealty.com