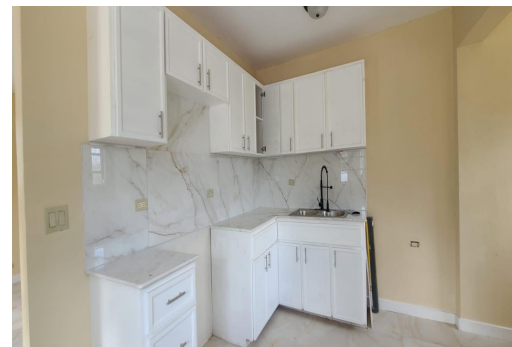
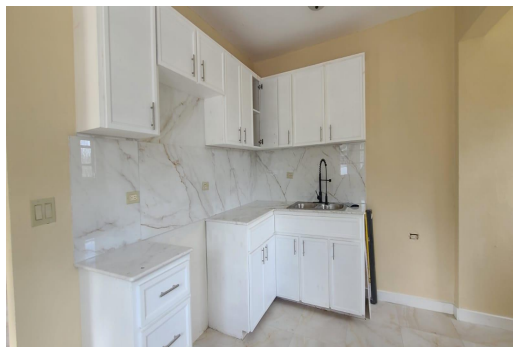


KING'S SUBDIVISION, South Beach, New Providence/Paradise Island



This beautifully renovated 3-bedroom, 2-bathroom home in King's Subdivision offers modern...

This beautifully renovated 3-bedroom, 2-bathroom home in King's Subdivision offers modern comfort on a peaceful cul-de-sac. With all-new upgrades, including hurricane impact windows and doors, laundry plumbing and electrical supplies are already in place, ready for your finishing touches. The home boasts a spacious, brand-new kitchen with updated cabinetry and modern finishes, perfect for cooking and entertaining. Located just minutes from the beach, whether you're enjoying the bright and airy living spaces or the tranquility of the quiet neighborhood, this home provides the ideal blend of style and convenience. A true find in a desirable location!...read more on our website.

Bedrooms: 3

Bathrooms: 2

Lot Size: 6000

Subdivision: South Beach

Features: Cul-de-sac,

Family Oriented, Garden

Area, Impact Windows,

Landscaped, Recreation

Nearby, Seniors Oriented,

Unfurnished

LOT 15 KING'S SUBDIVISION, South Beach,

New Providence/Paradise Island

Phone:



\$250,000 ID# M60792 [View Online](#)
www.sarlesrealty.com