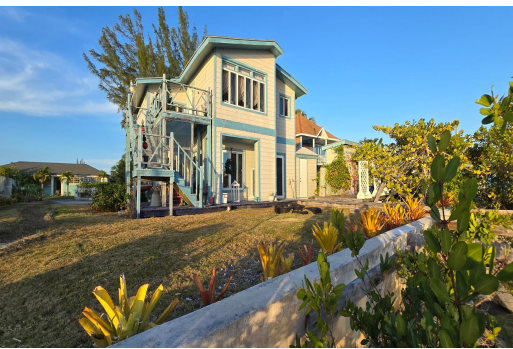


PIPE CREEK DRIVE, Yamacraw, New Providence/Paradise I



Welcome to your dream waterfront retreat nestled in the heart of the southern shores of East...

Welcome to your dream waterfront retreat nestled in the heart of the southern shores of East Nassau! This charming two-story cottage boasts a timeless design and is perfectly positioned across from the new, 'Legends Marina', offering breathtaking views and easy access to boating adventures. The Hardie plank exterior combines durability with stunning aesthetics, while the concrete construction ensures both safety and longevity. Enjoy family gatherings in the styled living room, or in the cozy dining room with front row seats to the sea that flows to a lovely deck, perfect for entertaining or simply sipping your morning coffee. Three bedrooms and three baths are comfortable and perfect for a family. Waterfront living is what the Bahamas is all about! The ample yard offers endless possibiliti...read more on our website.

Bedrooms: 3
Bathrooms: 3
Lot Size: 8400
Subdivision: Yamacraw
Features: Beach Front,
Cable, Garden Area

#10 PIPE CREEK DRIVE,
Yamacraw, New
Providence/Paradise Island
Phone:



\$735.000 ID# M60755 [View Online](#)
www.sarlesrealty.com