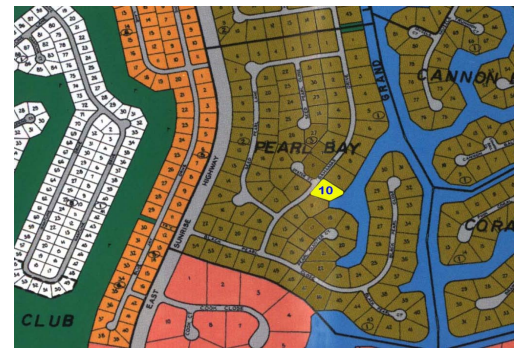
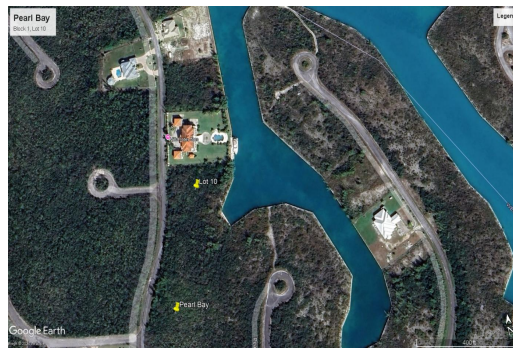


Canal-front Vacant Land in Pearl Bay



Canal-Front Multi-family Hi-Rise

Unlock the potential of prime real estate in the heart of Pearl Bay with this exceptional canal-front multi-family hi-rise. Spanning 111 acres, this property offers breathtaking views and unparalleled access to the water, making it a unique investment opportunity.

Invest in a property that promises not just stunning views but also substantial returns. With the real estate market in Pearl Bay on the rise, this canal-front multi-family hi-rise is a smart choice for savvy investors looking to capitalize on a flourishing area. ...read more on our website.

Lot Size: 48248 sq ft
Subdivision: Pearl Bay
Features: Canal Front



Tiffany Smith

Phone:

kekris4@gmail.com



\$250,000 ID# 54311 [View Online](#)
www.sarlesrealty.com