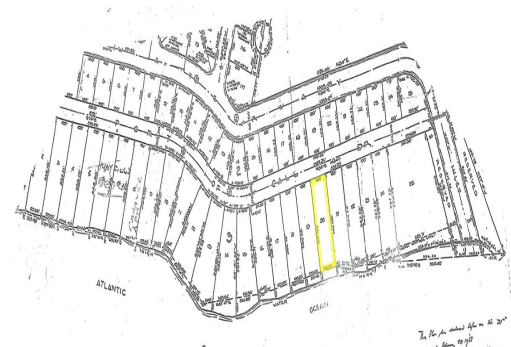
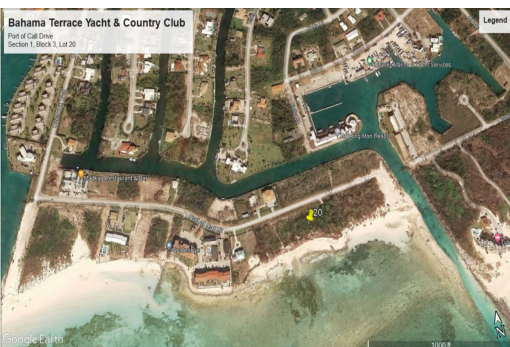


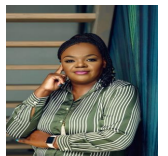
20 Port of Call Drive – Beach Land



Water Front Commercial Land

This is a great opportunity to own a waterfront commercial lot in an excellent location. Located in the Bahama Terrace area, this beachfront commercial lot is ideal with private access to the ocean. Zoned tourist commercial, you can build a high-rise hotel, restaurant, condominium complex, or a single-family home. Boasting 100' of Ocean frontage and 30,000 square feet. Give us a call; let us arrange a viewing today. ...read more on our website.

Lot Size: 0.68
Living Area: 30,000
Maint. Fees: -
Subdivision: Bahama
Terrace



Shelly Gardiner

Phone:

gardinershelly@gmail.com



\$350,000 ID# 46674 [View Online](#)
www.sarlesrealty.com