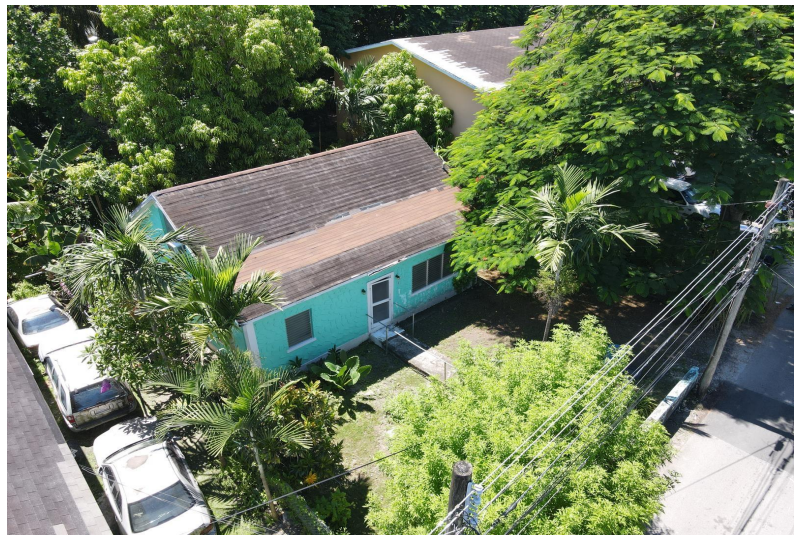
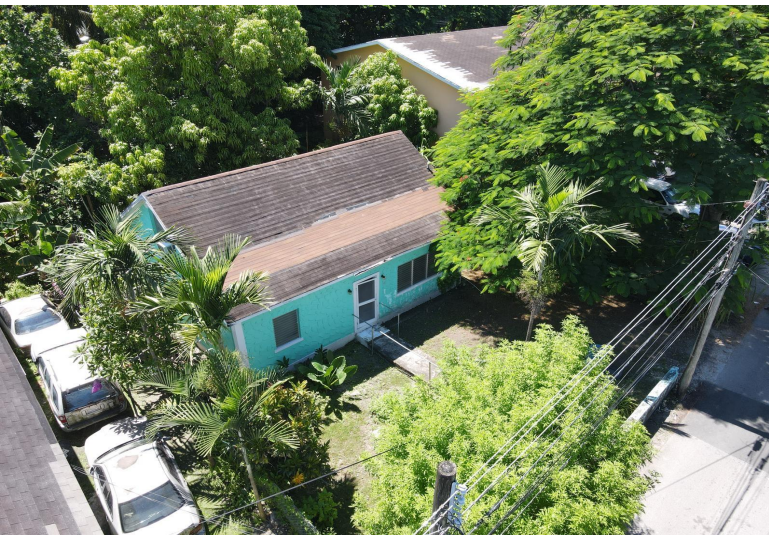


# KENILWORTH STREET, Centreville, New Providence/Paradise Island



## **This 5000 square foot lot in the heart of town off Mt Royal Avenue features an older Cape Cod style...**

This 5000 square foot lot in the heart of town off Mt Royal Avenue features an older Cape Cod style home. If you are looking for a centrally located home this can also be the perfect spot for your family as it features a bonus space in a loft type second floor. A new kitchen has been recently installed featuring beautifully handcrafted wood cabinets and a clean crisp new tile floor. Suitable for conversion to office space or other business need. Its location, next to the bustling commercial area of Collins Avenue, Palmdale and Wulff Roads is ideal. Possibilities are endless, its a steal of a deal so call today to view...read more on our website.

Bedrooms: 3  
Bathrooms: 2  
Lot Size: 5000  
Subdivision: Centreville  
Features: None

KENILWORTH STREET,  
Centreville, New  
Providence/Paradise Island  
Phone:



**\$149.000 ID# M59390** [View Online](#)  
[www.sarlesrealty.com](http://www.sarlesrealty.com)