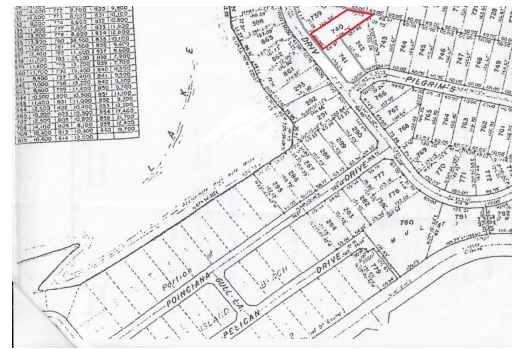


740 BAHAMA DRIVE, Little Exuma, Exuma & Exuma C



A single-family residential lot in the Bahama Island Beach Section 3 subdivision. A short walk...

A single-family residential lot in the Bahama Island Beach Section 3 subdivision. A short walk takes you to a lovely beach. Electricity is available to the lot. Public water supply is not available at this time. It can be supplied by drilling a well and/or a rainwater catchment. The adjacent lots 741 & 742 are also available for sale at the same price. Williamstown is the nearest settlement with 2 restaurants: Santanna's Bar & Grill, Tropic Breeze Beach Bar & Grill and Marva's Place. Distance to George Town with all amenities is a 40-minute drive....read more on our website.

Bedrooms: 0
Bathrooms: 0
Lot Size: 10341
Subdivision: Little Exuma
Features: None, View - Ocean

740 BAHAMA DRIVE, Little Exuma, Exuma & Exuma Cays
Phone:



\$50,000 ID# M60690 [View Online](#)
www.sarlesrealty.com