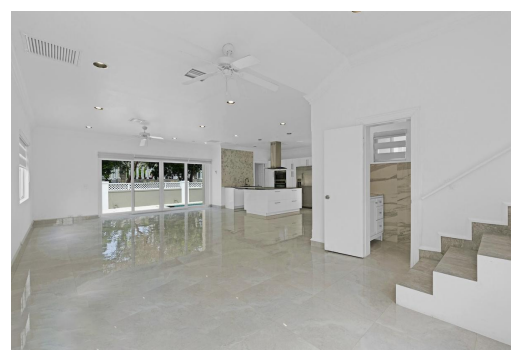
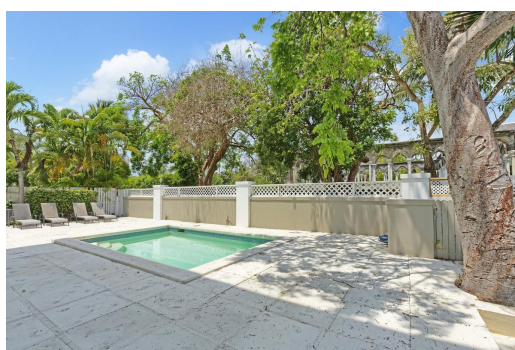


# PALATIAL ESTATES, Paradise Island, New Providence/Paradise



## One of just six homes within a gated community bordering the historic Cloisters and Four Seasons...

One of just six homes within a gated community bordering the historic Cloisters and Four Seasons Ocean Club, Jasmine House is well positioned on highly demanded Paradise Island and perfect for a family. The fully renovated main level enjoys an open plan layout with well equipped kitchen flanked by a large adjoining family/media room or gym, half bathroom and laundry. With windows and doors on three sides, an abundance of natural light floods the great room which leads through impact glass doors to the private pool and patio overlooking the Cloisters; the perfect place for family fun and gatherings. Upstairs two guest rooms share a modern bathroom while the master suite is a two-level retreat with oversized bathroom and walk-in closet in addition to a loft for a home office with enormous fi...read more on our website.

Bedrooms: 3

Bathrooms: 3

Lot Size: 0

Subdivision: Paradise

Island

Features: Can Be Rented,

Fully Walled, Gated

Community, Golf Course

Nearby, Main Level Entry,

Marina Nearby, Partial

Furnished, Pets Allowed,

Recreation Nearby,

Shopping Nearby,

Swimming Pool

PALATIAL ESTATES, Paradise  
Island, New Providence/Paradise  
Island

Island

Phone:



**\$1,200,000 ID# M58102** [View Online](#)  
[www.sarlesrealty.com](http://www.sarlesrealty.com)