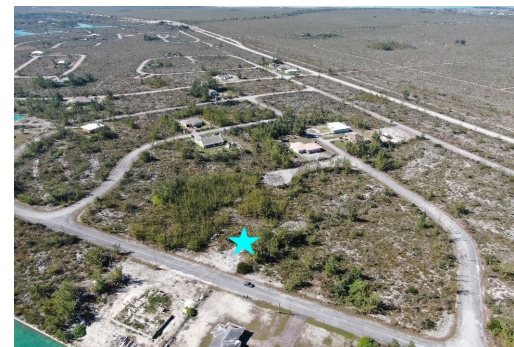


9 MUNDON DRIVE, Emerald Bay, Grand Bahama/Freeport



Single family lot in Emerald Bay overlooking the Grand Lucayan Waterway. Public boat ramps nearby....

Single family lot in Emerald Bay overlooking the Grand Lucayan Waterway. Public boat ramps nearby. Quick access to Grand Bahama Highway. Annual service charges at under \$300 per year....read more on our website.

Bedrooms: 0

Bathrooms: 0

Lot Size: 16512

Subdivision: Emerald Bay

Features: None, View -

Ocean

9 MUNDON DRIVE, Emerald Bay, Grand Bahama/Freeport

Phone:



\$35,000 ID# M57930 [View Online](#)
www.sarlesrealty.com