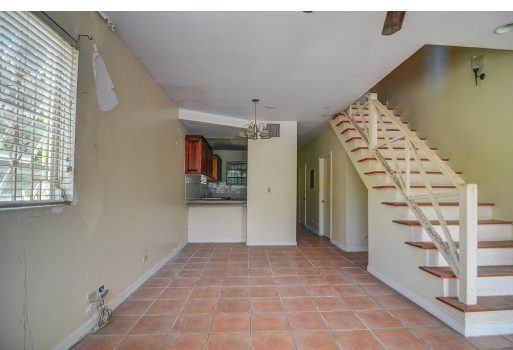


COUNTRY CLUB ESTATES, Carmichael Road, New Providence/Paradise Island



Nestled in the serene enclave of Country Club Estates, this delightful two-story townhome awaits...

Nestled in the serene enclave of Country Club Estates, this delightful two-story townhome awaits its transformation. With 2 bedrooms, 1.5 bathrooms, and approximately 1,220 sq.ft. of living space, this unit offers a promising canvas for investment or cozy living. While minor cosmetic updates are needed inside and out, envision the potential to customize this space to your preferences. Country Club Estates, a gated community off Spikenard Road, offers tranquility just 10 minutes from the Sir Lynden Pindling International Airport, schools, restaurants, and groceries. Embrace the opportunity to create your ideal haven in this prime location.....read more on our website.

Bedrooms: 2
Bathrooms: 1
Lot Size: 17000
Subdivision: Carmichael Road
Features: Family Oriented, Landscaped, Main Level Entry, Quiet Area, Recreation Nearby, Shopping Nearby, Unfurnished

COUNTRY CLUB ESTATES,
Carmichael Road, New Providence/Paradise Island
Phone:



\$171.000 ID# M57590 [View Online](#)
www.sarlesrealty.com