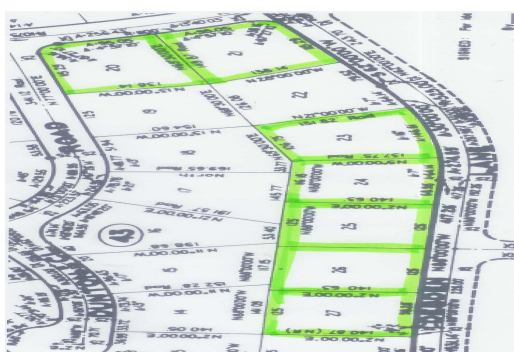
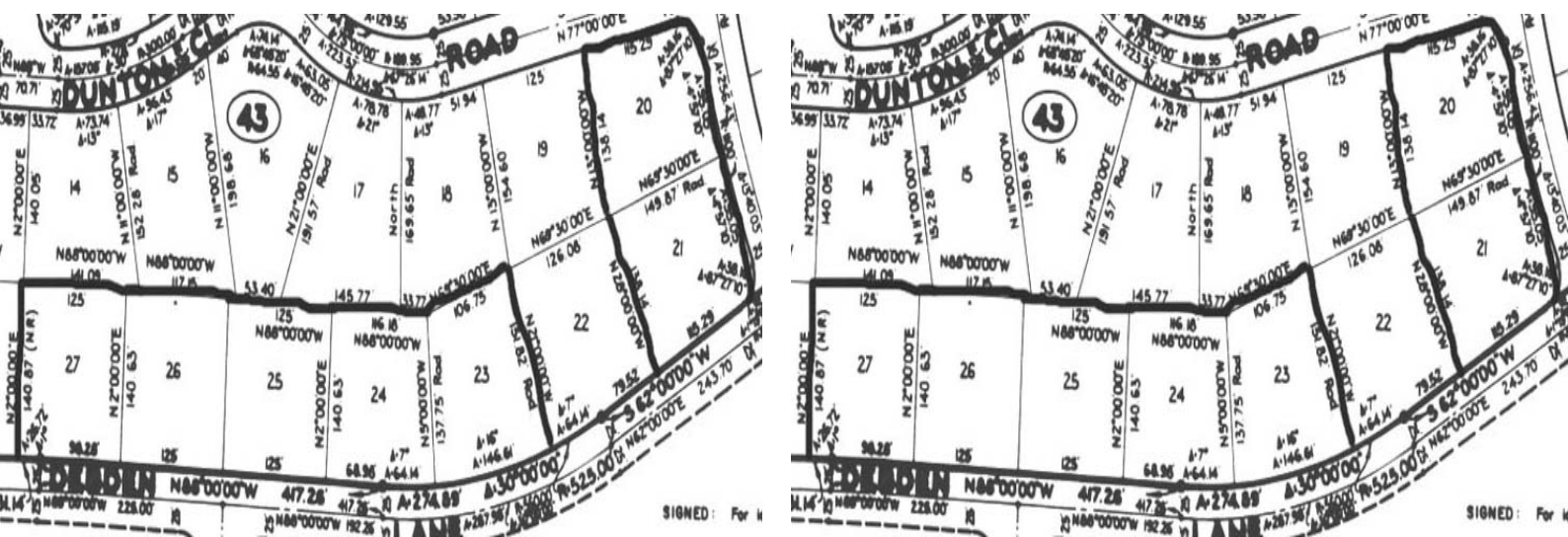


Emerald Bay Lots



Here is a deal that can not be passed up! This is a developer's dream and the seller is...

Here is a deal that can not be passed up! This is a developer's dream and the seller is motivated and ready to sell.

Located in Emerald with a great view of the canal, is 7 lots ready to be purchased and developed into an exquisite dream setting. Lots 20 with 15,926 sq. ft., lot 21 with over 20,703 sq. ft., lot 23 with 16,207 sq. ft., lot 24 has 16,338 sq. ft., lot 25 has 15,625 sq. ft., lot 26 has 15,625 sq. ft. and lot 27 with 17,609 sq. ft.

...read more on our website.

Subdivision: Emerald Bay



James Sarles

Phone: (242) 727-8888

jamesarlesrealty@gmail.com



\$461,000 ID# 1946 [View Online](#)
www.sarlesrealty.com