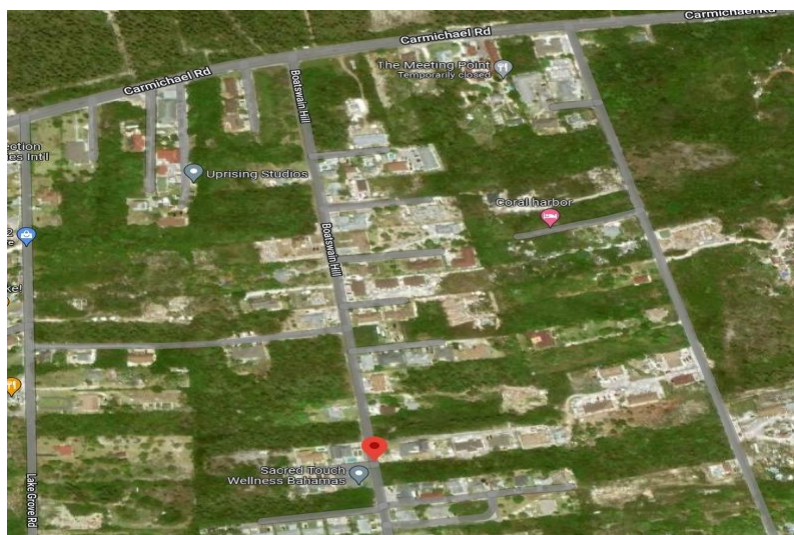
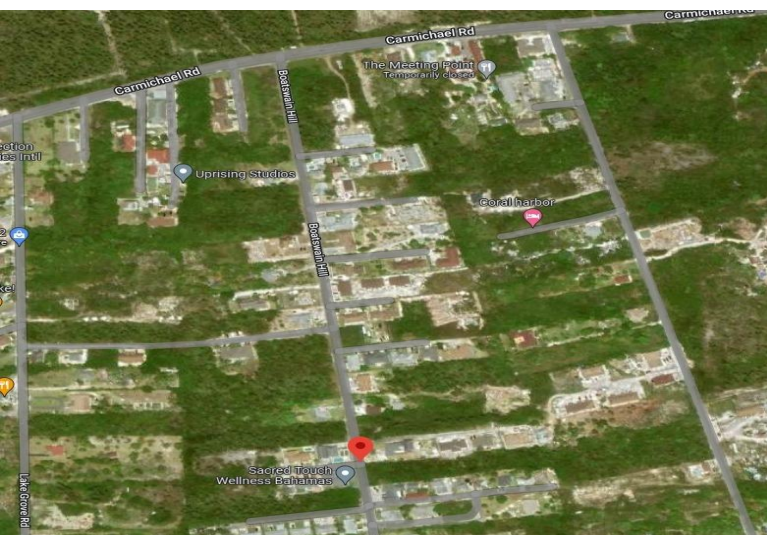


# BOATSWAIN HILL 1.14 ACRES, Coral Harbour, New Providence/Paradise Island



## Luxurious, Captivating & Impeccable Boatswain Hill multifamily 1.13 acres are on sale! The...

Luxurious, Captivating & Impeccable Boatswain Hill multifamily 1.13 acres are on sale! The area is safe, quiet and beautiful and it is close to Coral Harbour, Albany, restaurants, schools, churches, shopping, airports, the sea & many beaches! This is a developer's dream! We have no more like this multifamily lot! Call us today before it is gone!...read more on our website.

Bedrooms: 0  
Bathrooms: 0  
Lot Size: 49222  
Subdivision: Coral Harbour  
Features: Acreage, Adult Oriented, Easy Access, Family Oriented, Fuel to Lot, Highway Access, Hillside, Low Maint Yard, None, Pets Allowed, Phone to Lot, Quiet Area, Recreation Nearby, Road - Paved, Seniors Oriented, Shopping Nearby, Southern Exp

BOATSWAIN HILL 1.14 ACRES,  
Coral Harbour, New  
Providence/Paradise Island  
Phone:



**\$410.000 ID# M60660** [View Online](#)  
[www.sarlesrealty.com](http://www.sarlesrealty.com)