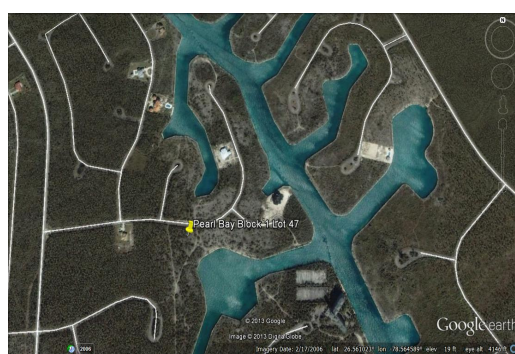
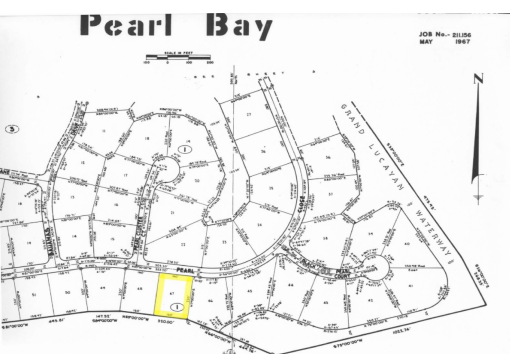


Multi-Family Land in Pearl Bay



Adjacent Lot also available for sale. Great Lot! Amazing Price!

Located on Black Pearl Close off East Sunrise Highway, this lot is situated in the Pearl Bay Subdivision and is an excellent location for your executive home. Just Minutes away from the Lucayan Waterway, beaches, schools and shopping this property has great potential. Property is a little over 3/4 acre in size measured at 160' x 220' with 35,200 sq ft. A Great lot in an amazing location! Adjacent lot also available for sale, see listing 1467.

...read more on our website.

Lot Size: 35,200 sq ft
Maint. Fees: \$250.00 a year
Subdivision: Pearl Bay



Ina Simmons

Phone: 242-727-0707
inasimmons@gmail.com



\$35,000 ID# 1466 [View Online](#)
www.sarlesrealty.com