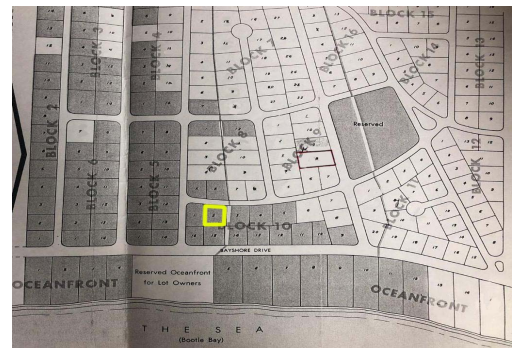
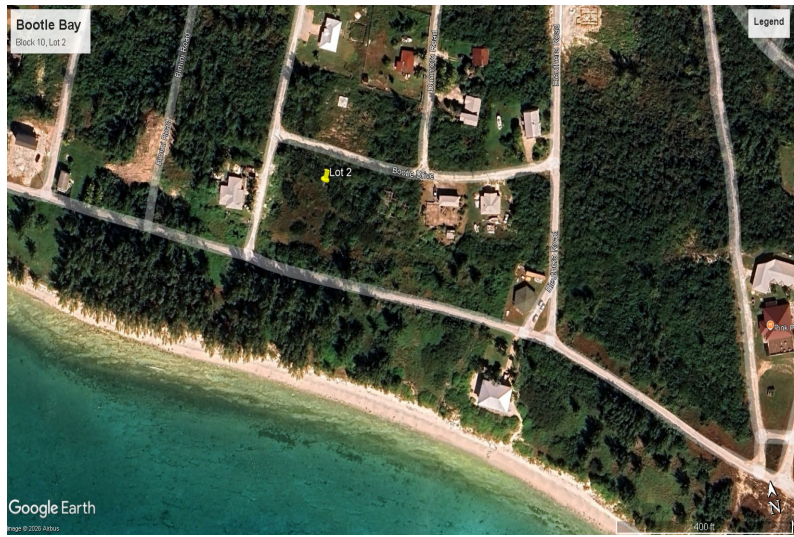


Bootle Bay – Affordable Homesite Near the Beach



Bootle Bay land yards away from the ocean

Build your island dream home on this generously sized 11,050 sq. ft. (0.25-acre) single-family lot located on Bootle Drive in the growing community of Bootle Bay, Grand Bahama. Just a short walk from a pristine white sand beach, this property offers an excellent opportunity to secure an affordable piece of paradise in one of West End's most promising residential areas.

With no annual land service charges, ownership is both simple and cost-effective. The lot's elevated potential makes it especially attractive, as a future two-story residence could enjoy beautiful ocean views, adding both lifestyle and investment value.

Conveniently located near the settlement of West End known as the Conch Capital...read more on our website.

Lot Size: 0.25
 Living Area: 11,050
 Subdivision: West End /
 West Grand Bahama



Nycara Saunders

Phone:

nycara.saunders@gmail.com



\$62,400 ID# 5354 [View Online](#)
www.sarlesrealty.com