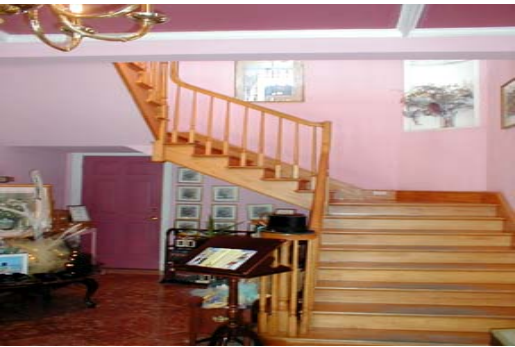


# Perfume Factory



## **This three storey, fully functioning perfume factory, was constructed in a colonial mansion style....**

The Perfume Factory 'mansion' is a well recognized site in the world famous International Bazaar. The building is zoned commercial and is well suited for a restaurant or a commercial outlet. It is situated in the highly traveled area of the Bazaar well within the walking proximities of the area resorts. It is easily visible to all traffic through the area. Parking is to the rear and side of the building in the very large Bazaar customer parking lot.

The ground floor consists of 3,197sqft with an approximate square footage of just under 10,000sqft...read more on our website.

Lot Size: 0.25  
Living Area: 9891  
Maint. Fees: -  
Subdivision: Bahamia



James Sarles

Phone: (242) 727-8888  
jamesarlesrealty@gmail.com



**\$550,000 ID# 1338 [View Online](#)**  
**[www.sarlesrealty.com](http://www.sarlesrealty.com)**