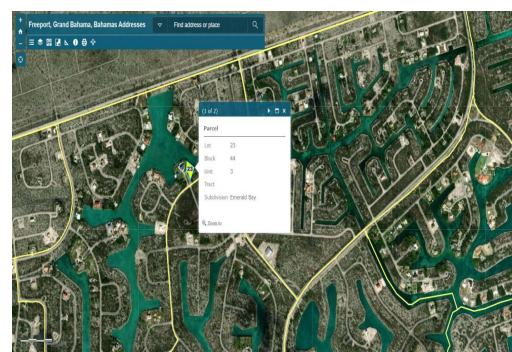
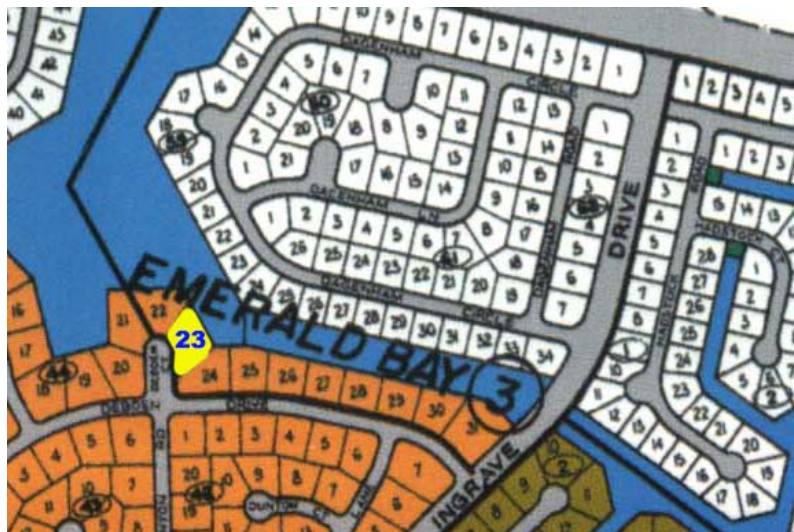
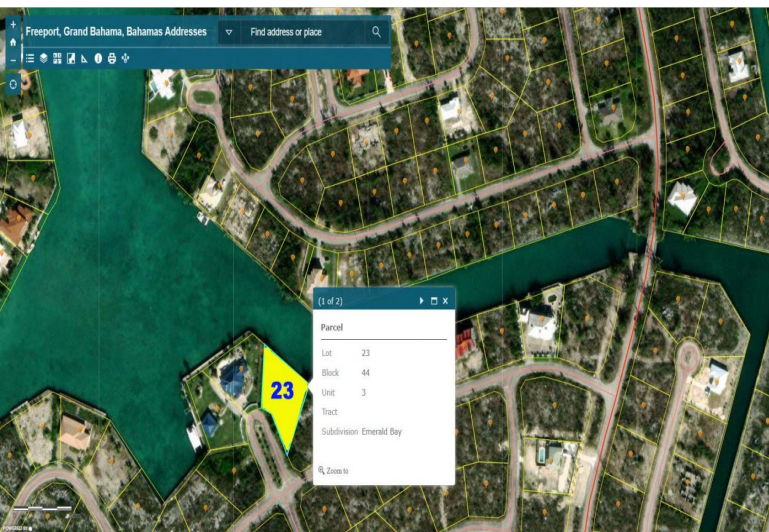


Emerald Bay Multifamily Lot



Located on Debden Drive in Emerald Bay just off the Lucayan Waterway sits an excellent canal lot boasting 185 feet of canal frontage. Measured a little over 18,000 square feet this property is perfect for an ideal home or a great income producing development....read more on our website.

Lot Size: 18,500 sq ft
Maint. Fees: -
Subdivision: Emerald Bay
Features: Canal Front
185' Waterfront



Denise Smith

Phone: 242-351-9081

denisevsmith08@gmail.com



\$165,000 ID# 1805 [View Online](#)
www.sarlesrealty.com

Ph: (242) 351-9081 | Web: www.sarlesrealty.com