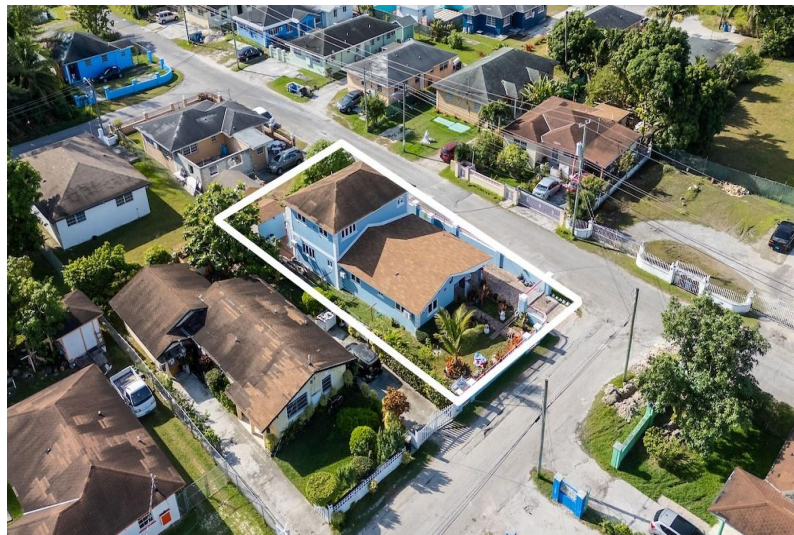


BONEFISH DRIVE, TELLIE CT, Cowpen Road, New Providence/Paradise Island



This 11,997 sq. ft. property features a 2,536 sq. ft. building with two units. Unit 1 includes two...

This 11,997 sq. ft. property features a 2,536 sq. ft. building with two units. Unit 1 includes two bedrooms and one bathroom, while Unit 2 offers two bedrooms, two bathrooms, an office, and a laundry room. Situated in a peaceful neighborhood, this property is perfect for comfortable living or investment potential....read more on our website.

Bedrooms: 4
Bathrooms: 3
Lot Size: 11997
Subdivision: Cowpen
Road
Features: Can Be Rented,
Family Oriented, Fully
Fenced, Highway Access,
Road - Paved

BONEFISH DRIVE, TELLIE CT,
Cowpen Road, New
Providence/Paradise Island
Phone:



\$435,000 ID# M60622 [View Online](#)
www.sarlesrealty.com