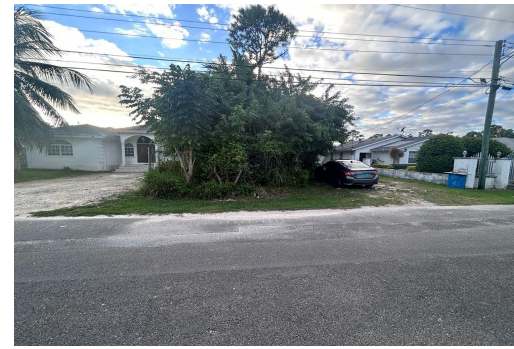
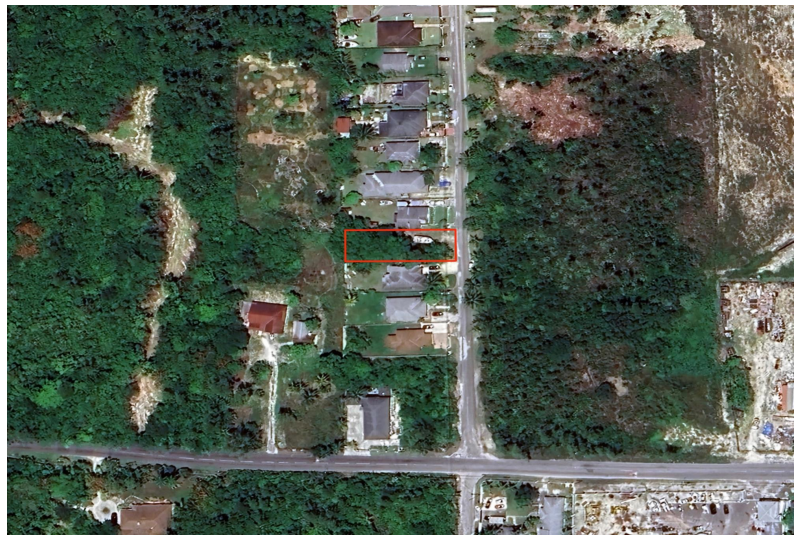


# CORAL MEADOWS, Coral Harbour, New Providence/Paradise Island



## **This Multi-Family Lot is located in the west just off Adelaide Rd. north of Coral Lakes...**

This Multi-Family Lot is located in the west just off Adelaide Rd. north of Coral Lakes Subdivision. It measures 7,500 sqft and has all utilities available and is ready to be developed. This location is desirable as it is only 1/2 mile east of the new Windsor Estates and the Albany Golf Course....read more on our website.

Bedrooms: 0  
Bathrooms: 0  
Lot Size: 7500  
Subdivision: Coral Harbour  
Features: None

LOT #7 CORAL MEADOWS,  
Coral Harbour, New  
Providence/Paradise Island  
Phone:



**\$90,000 ID# M60549** [View Online](#)  
[www.sarlesrealty.com](http://www.sarlesrealty.com)