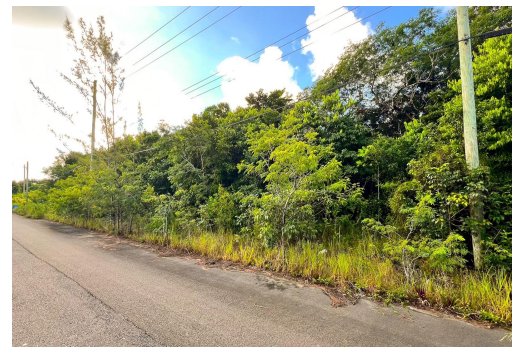


LOVE ESTATES SUB, Love Beach, New Providence/Paradise Island



Love Estates is known for its tight-knit community and well-maintained properties, offering a safe...

Love Estates is known for its tight-knit community and well-maintained properties, offering a safe and inviting environment. Whether you're looking to build a primary residence or a vacation getaway, this property is an exceptional investment. This 10,577 square foot, vacant, single family lot offers endless possibilities for creating your ideal living space in a tranquil and friendly community. It is being sold as one entire acre or into four separate lots starting at 7500 square feet each. Lot 27D is 10,577 sq ft. Don't miss out on this rare opportunity! Contact us today for more details or to schedule a viewing. Your dream home awaits in Love Estates!...read more on our website.

Bedrooms: 0

Bathrooms: 0

Lot Size: 10577

Subdivision: Love Beach

Features: Family Oriented,

None, Pets Allowed,

Quiet Area, Recreation

Nearby, Road - Paved,

Shopping Nearby, Treed

Lot

LOT 27D, LOVE ESTATES SUB,

Love Beach, New Providence/Paradise Island

Phone:



\$180.000 ID# M60533 [View Online](#)
www.sarlesrealty.com