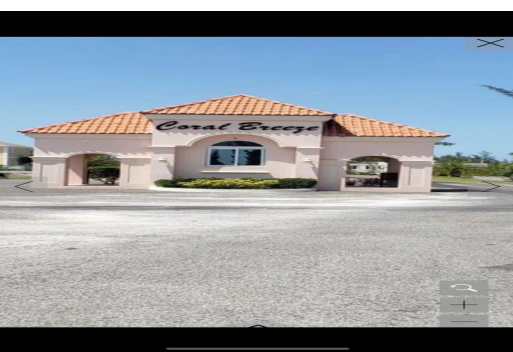
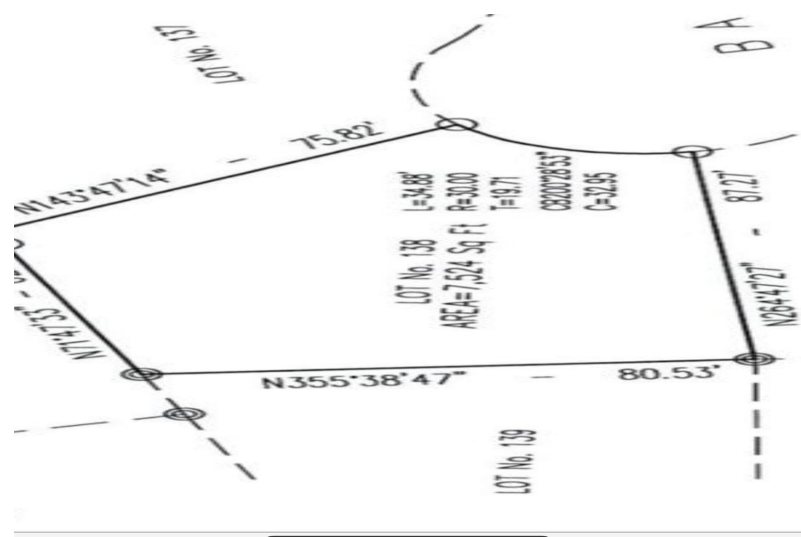
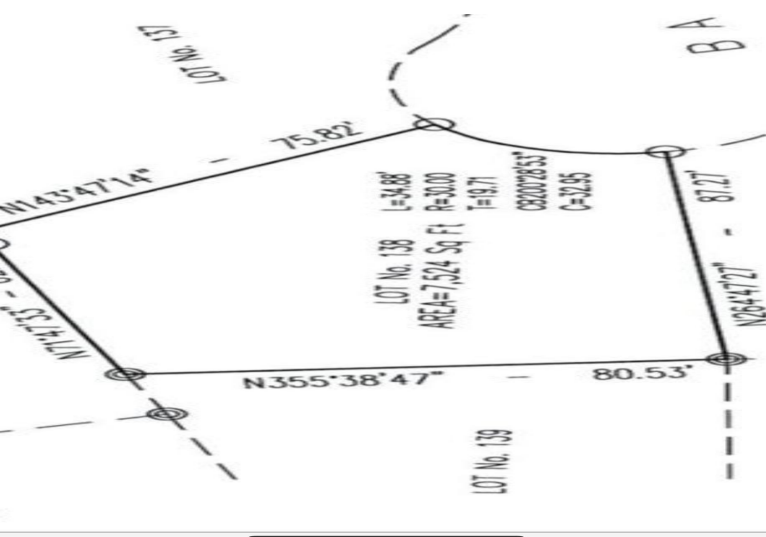


BERRY STREET, Coral Harbour, New Providence/Paradise Island



Single Family lot in the beautiful gated community of coral breeze.

Single Family lot in the beautiful gated community of coral breeze....read more on our website.

Bedrooms: 0
Bathrooms: 0
Lot Size: 7524
Subdivision: Coral Harbour
Features: None

BAYBERRY STREET, Coral
Harbour, New
Providence/Paradise Island
Phone:



\$110,000 ID# M60212 [View Online](#)
www.sarlesrealty.com