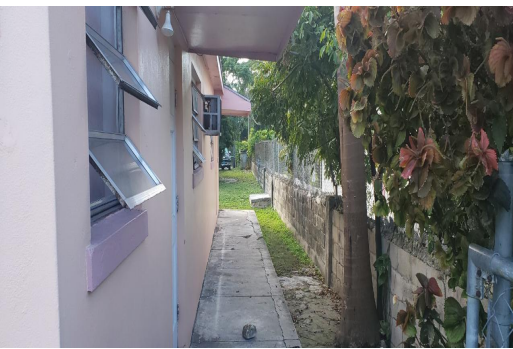


# WALLACE ROAD, Chippingham, New Providence/Paradise I



**This Duplex is situated at 19 Wallace Road. The lot approximates 5,100 sq ft in size. It is a part...**

This Duplex is situated at 19 Wallace Road. The lot approximates 5,100 sq ft in size. It is a part of the middle-income neighborhood of the Greater Chippingham Subdivision. The property is represented by: 2 " 2 bedroom 1 bathroom units with a living / Dining Room. There is an unfinished Efficiency that can be completed to generate additional rental income. The 2 finished units are fully leased with reliable tenants. Each unit rents at \$800 monthly. Annual rental income is \$19,200. Expenses approximate 40% thereof to generate potential net income of \$11,520 The building can be expanded to two (2) stories to add another 2 units, which plus the efficiency will represent a total of 5 units to minimally generate \$4,000 in monthly rental income....read more on our website.

Bedrooms: 4  
Bathrooms: 2  
Lot Size: 5077  
Subdivision: Chippingham  
Features: Unfurnished

19 WALLACE ROAD,  
Chippingham, New  
Providence/Paradise Island  
Phone:



**\$275,000 ID# M55986 View Online**  
**www.sarlesrealty.com**