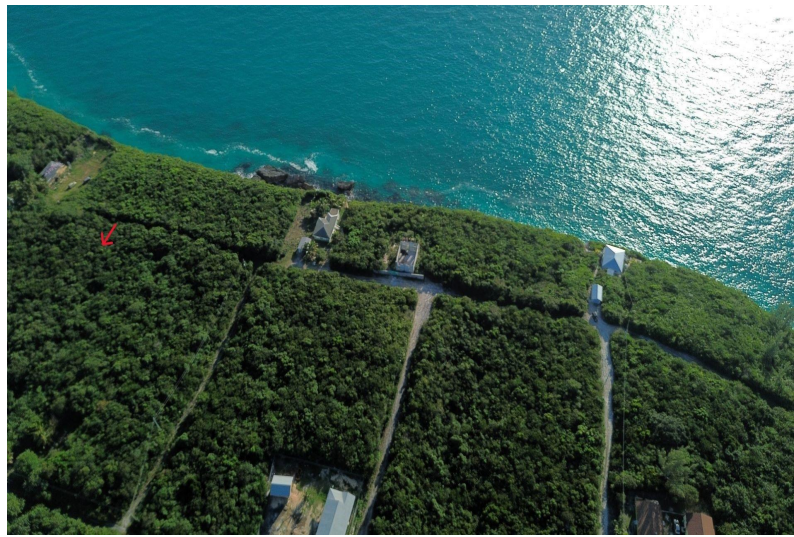


ELEUTHERA ISLAND SHORES, Gregory Town, Eleuthera



Elevated lot on the Sound side of Eleuthera Island Shores. Water views possible from second story...

Elevated lot on the Sound side of Eleuthera Island Shores. Water views possible from second story and potentially from ground level as well. A beautiful and peaceful spot for a home. Eleuthera Island Shores is situated across the road from famous Surfer's Beach, just outside the pretty local settlement of Gregory Town, the pineapple capital of the Bahamas. Within a 20 minutes' drive is the nearest airport [North Eleuthera] for a quick flight to Nassau or Fort Lauderdale and the ferry to Harbour Island and Spanish Wells....read more on our website.

Bedrooms: 0
Bathrooms: 0
Lot Size: 9600
Subdivision: Gregory Town
Features: Easy Access, Family Oriented, Highway Access, None, Quiet Area, Road - Paved, Treed Lot, View - Ocean

ELEUTHERA ISLAND SHORES,
Gregory Town, Eleuthera
Phone:



\$45,000 ID# M57118 [View Online](#)
www.sarlesrealty.com