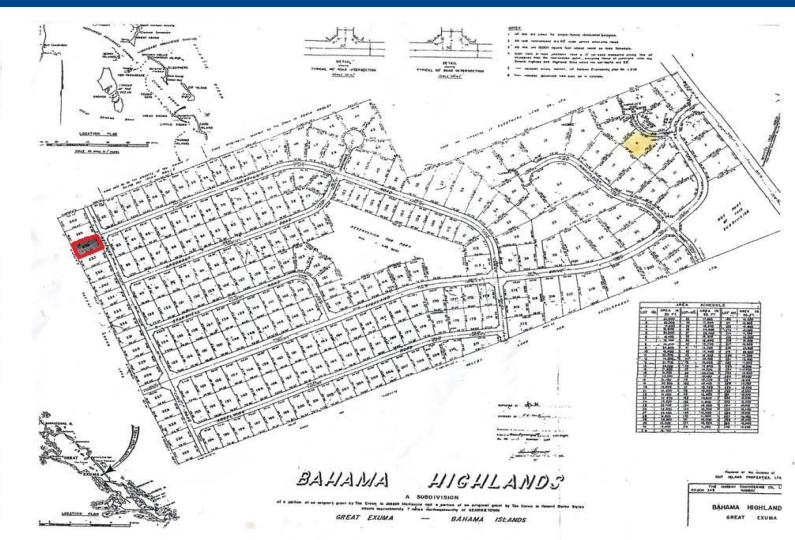
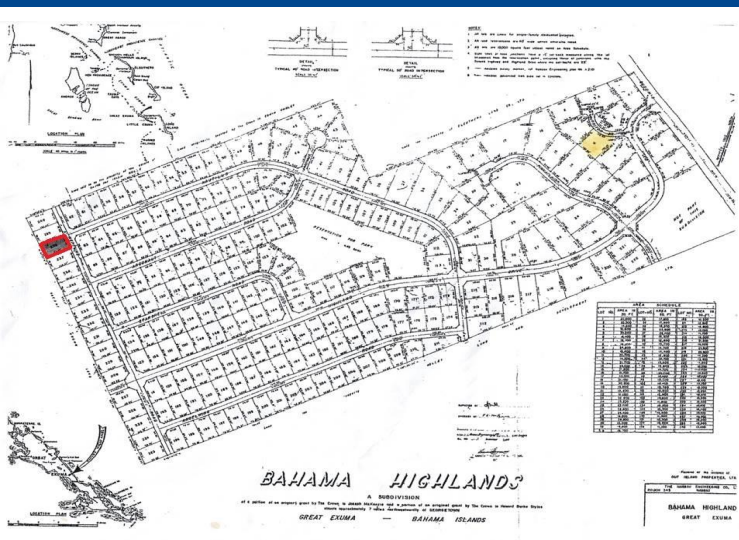


NEPTUNE ROAD, Bahama Highlands, Exuma & Exuma



Lot 238, Bahama Highlands is located directly behind Kermit's Airport Lounge & Bar which...

Lot 238, Bahama Highlands is located directly behind Kermit's Airport Lounge & Bar which is situated across from the main terminal at Exuma's International Airport. Ideal location for office/storage facility.....read more on our website.

- Bedrooms: 0
 - Bathrooms: 0
 - Lot Size: 11040
 - Subdivision: Bahama Highlands, Exuma & Exuma Cays
 - Features: Golf Course
 - Nearby, Level Lot,
 - Marina Nearby, None,
 - Southern Exp
- 238 NEPTUNE ROAD, Bahama Highlands, Exuma & Exuma Cays
Phone:



\$145.000 ID# M60525 [View Online](#)
www.sarlesrealty.com