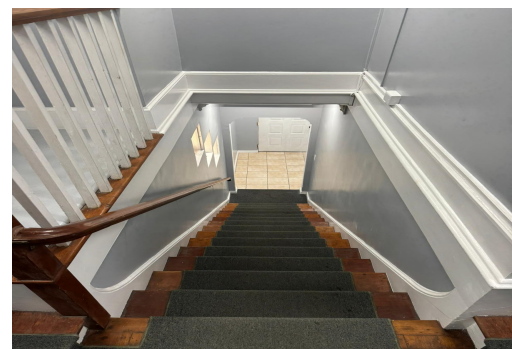


ELIZABETH AVENUE, Downtown, New Providence/Paradise Island



Prime Downtown Nassau Residential Space â€“ Ideal for Modern Living This newly renovated 737 sq ft,...

Prime Downtown Nassau Residential Space â€“ Ideal for Modern Living
This newly renovated 737 sq ft, 3rd-level residential unit offers the perfect blend of comfort and convenience in the heart of downtown Nassau. The layout features 2 spacious bedrooms, 1 full bathroom, a cozy living area, and a well-equipped kitchenette. Enjoy modern finishes throughout, including new fixtures, updated countertops, stylish flooring, and energy-efficient LED lighting. The unit is designed for safety and peace of mind with hurricane impact windows, video access security, 24/7 fire monitoring, and access to a standby generator. Located just steps from downtown attractions and local hospitals, this home is perfectly situated for those seeking a vibrant yet accessible lifestyle. On-site property management ensu...read more on our website.

Bedrooms: 2
Bathrooms: 1
Lot Size: 737
Subdivision: Downtown
Features: Fully Fenced,
Fully Walled, Kitchen
Built-in(s), Partial
Furnished, Shopping
Nearby, Stand-by
Generator, Unfurnished

ELIZABETH AVENUE,
Downtown, New
Providence/Paradise Island
Phone:



\$2,500 ID# M60528 [View Online](#)
www.sarlesrealty.com