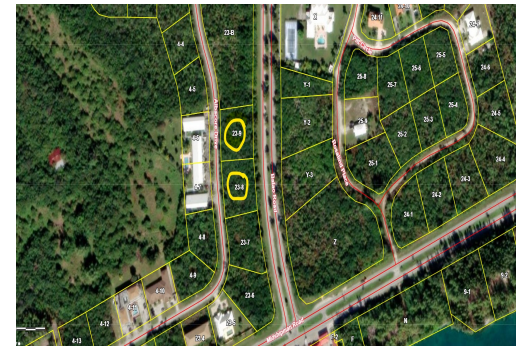
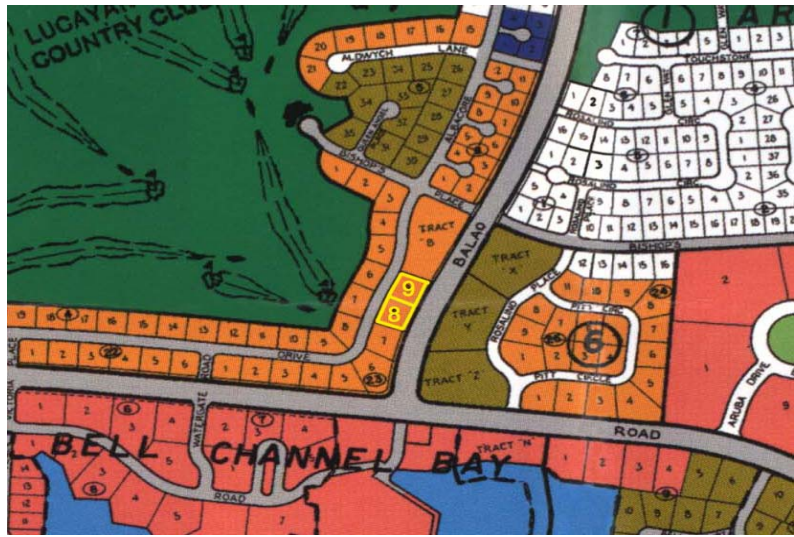
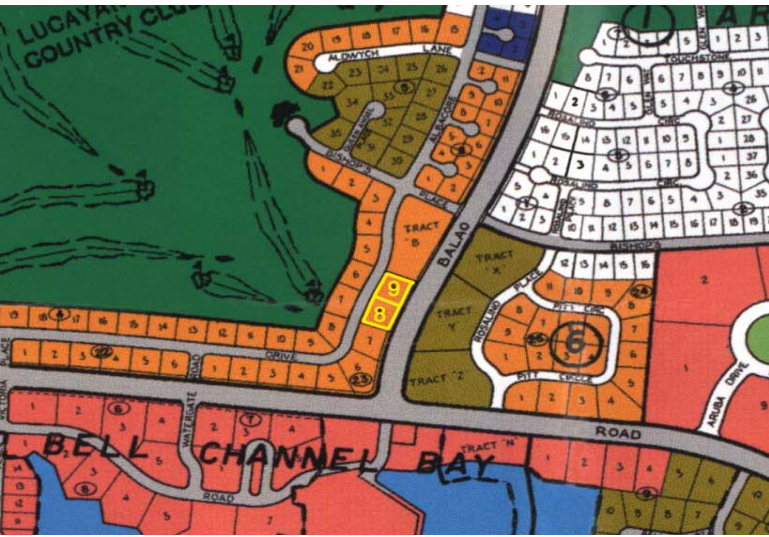


Prime Multifamily Lots in Greening Glade Subdivision



Opportunity waits with these two spacious multifamily-zoned lots located in the desirable Greening...

Opportunity waits with these two spacious multifamily-zoned lots located in the desirable Greening Glade Subdivision on Albacore Drive. With convenient access to Balao Road, these properties are perfectly positioned for development and investment.

Key Features:

- Lot 8: Generously sized at 24,920 sq. ft.
- Lot 9: Spanning 23,350 sq. ft.
- Total Area: Combined, the lots offer an impressive 1.108 acres.

Prime Location:

- Just minutes from Cooper's Service Station for your everyday essentials.
- Close proximity to Port Lucaya Marketplace, offering dining, shopping, and entertainment.
- Nearby access t...read more on our website.

- Living Area: 48,270
- Subdivision: Greening Glade
- Features: Central location, Easy Access, Phone to Lot, Road - Paved, Shopping Nearby, Signs Allowed



Tiffany Smith
Phone:
kekris4@gmail.com



\$150,000 ID# 1070047 [View Online](#)
www.sarlesrealty.com