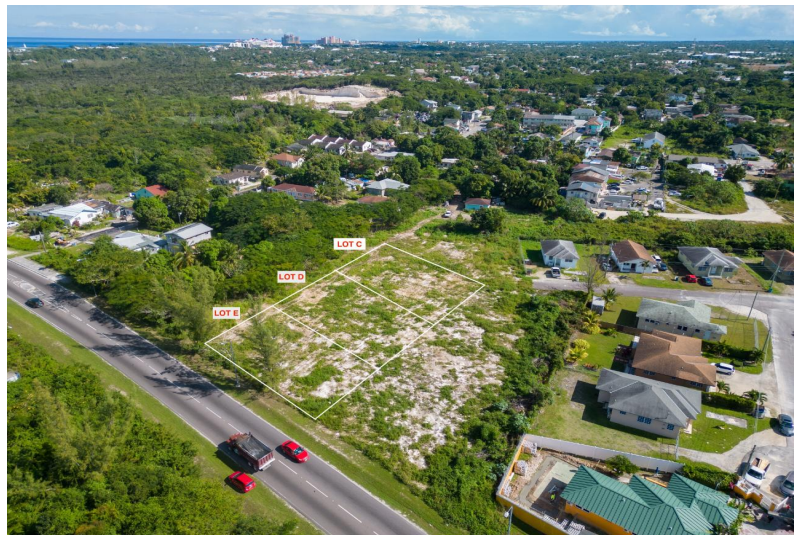
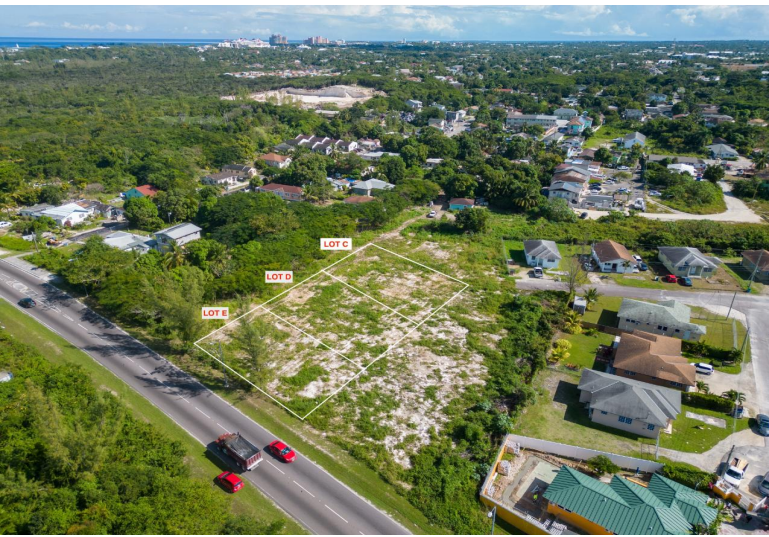


MULTI FAMILY LOTS, Chippingham, New Providence/Paradise Island



Multi-family lots investment opportunity with great highway access from Saunders beach roundabout...

Multi-family lots investment opportunity with great highway access from Saunders beach roundabout or Thompson Boulevard and JFK. These lots offer quick access to amenities from a quiet residential area. Suitable for an apartment complex, fourplex, triplex, or duplex. Can be purchased 1 lot or up to 3 lots (C,D and E) all next to each other (please refer to the plot plan and approximate boundary outline). Please ensure you are pre-qualified if you plan to finance. If you require assistance with your pre-qualification please ask....read more on our website.

Bedrooms: 0
Bathrooms: 0
Lot Size: 24417
Subdivision: Chippingham
Features: Central location,
Cul-de-sac, Easy Access,
Highway Access, Level
Lot, None, Private
Setting, Quiet Area,
Recreation Nearby,
Recreational, Shopping
Nearby

LAPILLI MULTI FAMILY LOTS,
Chippingham, New
Providence/Paradise Island
Phone:



\$375.000 ID# M55871 [View Online](#)
www.sarlesrealty.com