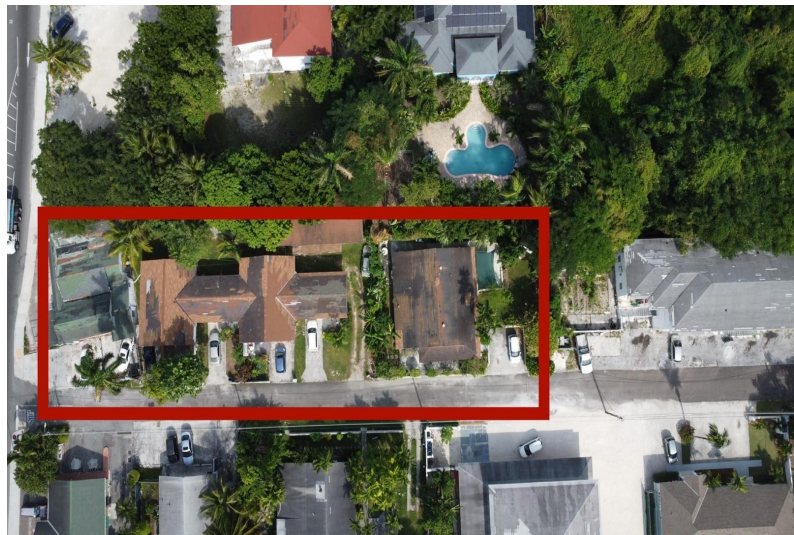
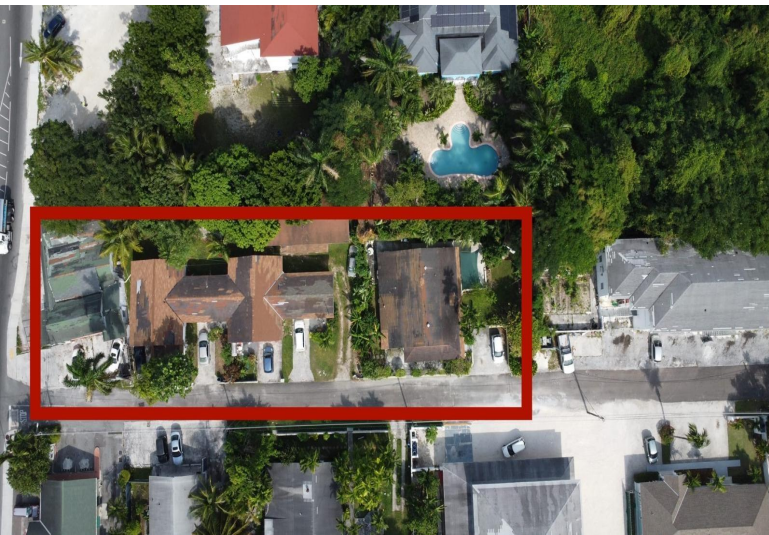


VILLAGE ROAD, Village Road, New Providence/Paradise Island



Unlock the potential of this exceptional mixed-use corner property, a true investor's dream...

Unlock the potential of this exceptional mixed-use corner property, a true investor's dream located on one of New Providence's busiest thoroughfares! This strategically positioned property on the main Village Road features three versatile shop spaces and an office, providing ample opportunity for retail or professional services. In addition to the commercial spaces, you'll find a well-designed layout in the rear, consisting of a two-bedroom, one-bath unit alongside four one-bedroom, one-bath apartments. This unique combination maximizes rental income potential while catering to the diverse needs of the community. With its prime location just minutes away from shopping, restaurants, banks, and the beach, as well as convenient access to public transportation and downtown Nassau, this property...read more on our website.

Bedrooms: 8
Bathrooms: 8
Lot Size: 18000
Features: Short Term Allowed

VILLAGE ROAD, Village Road,
Subdivision: Village Road
New Providence/Paradise Island
Phone:



\$900,000 ID# M60373 [View Online](#)
www.sarlesrealty.com