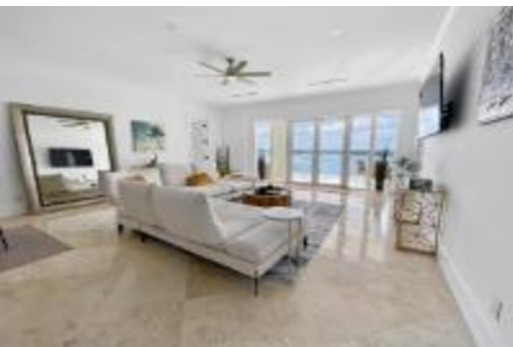


ONE OCEAN, Paradise Island, New Providence/Paradise Island



Exquisite 7th floor Ocean and Harbour views welcome you to a most spectacular home in Paradise!...

Exquisite 7th floor Ocean and Harbour views welcome you to a most spectacular home in Paradise! This spacious, single level luxury condo features an open floor plan with an alluring natural palette. Oversized windows bathe the home in sunlight, framing panoramic sea views and the unit includes oversized 24" polished travertine tiles throughout, fully integrated, top-of-the-line appliances such as Miele, while quartz countertops are reminiscent of renowned European kitchens. The master suite is a quiet retreat with picturesque views, ample closet space, and large master bathroom. The second bedroom is an ensuite with a walk-in closet. There is an additional den that can be converted into a study or a 3rd bedroom. One Ocean is the tallest residential building on Paradise Island and is ideall...read more on our website.

Bedrooms: 3
Bathrooms: 2
Lot Size: 2375
Subdivision: Paradise Island
Features: 24 Hour Security, Furnished, Gated Community, Golf Course Nearby, Hurricane Windows, Impact Windows, Kitchen Built-in(s), Marina Nearby, Recreation Nearby, Shopping Nearby, Stand-by Generator, Swimming Pool, View - Ocean, Waterfront - Ocean, Wheelchair Access

ONE OCEAN, Paradise Island,
New Providence/Paradise Island
Phone:



\$8.500 ID# M60306 [View Online](#)
www.sarlesrealty.com