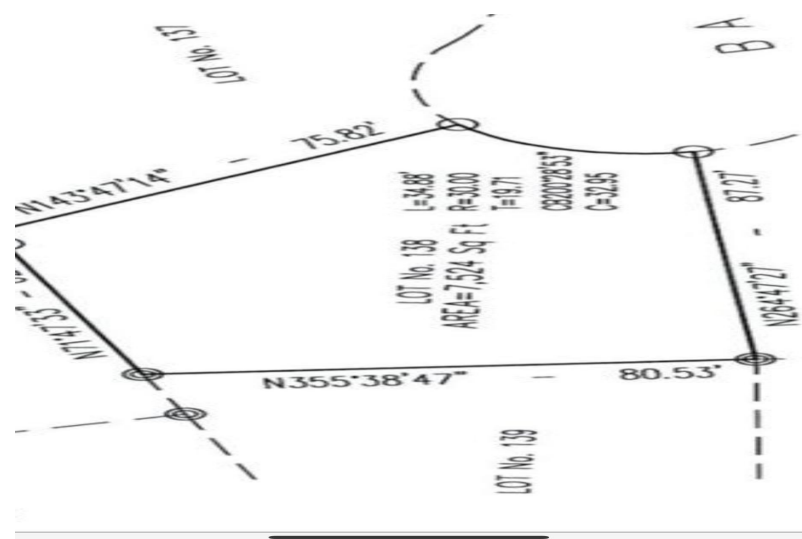
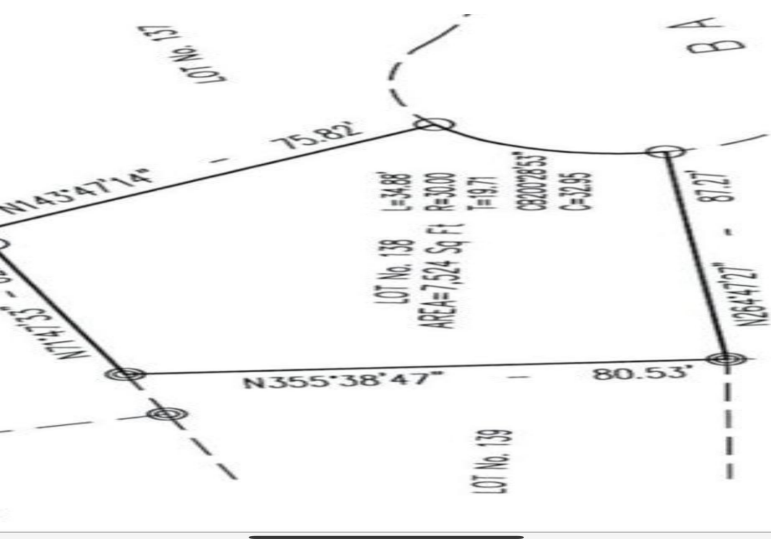


BERRY STREET, Coral Harbour, New Providence/Paradise Island



Single Family lot in the beautiful gated community of coral breeze.

Single Family lot in the beautiful gated community of coral breeze....read more on our website.

Bedrooms: 0
 Bathrooms: 0
 Lot Size: 7524
 Subdivision: Coral Harbour
 Features: None

BAYBERRY STREET, Coral Harbour, New Providence/Paradise Island
 Phone:



\$110.000 ID# M60212 View Online
www.sarlesrealty.com