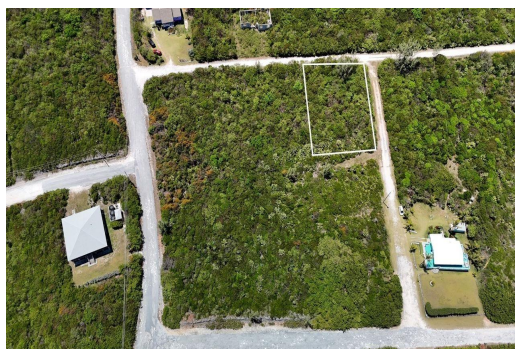


# RAINBOW BAY SUBDIVISION, Rainbow Bay, Eleuthera



## Lot 10, Block 21A, Section C, Rainbow Bay is a corner lot just steps away from Hidden Beach in a...

Lot 10, Block 21A, Section C, Rainbow Bay is a corner lot just steps away from Hidden Beach in a beautiful alcove located on the Atlantic side of the island of Eleuthera, Bahamas. This lot offers 10,000 square feet of beautiful indigenous coppice, a low maintenance landscaped garden ready for to go. Situated on Skipper Road, this gorgeous parcel has amazing potential. Enjoy stunning sunrises as you sip your morning beverage, it's truly such an amazing private location. Rainbow Bay beach is on the Caribbean side, just a short drive away and the community offers tennis courts and a boat ramp also. Rainbow Bay is 20 minutes from Governors Harbour and 20 minutes from Gregory Town, a convenient location, close to all amenities with the Rainbow Inn bed and breakfast and restaurant just around ...read more on our website.

Bedrooms: 0

Bathrooms: 0

Lot Size: 10000

Subdivision: Rainbow Bay

Features: Central location,

Easy Access, Highway

Access, Hillside, Low

Maint Yard, None, Treed

Lot

RAINBOW BAY SUBDIVISION,

Rainbow Bay, Eleuthera

Phone:



**\$65,000 ID# M60251** [View Online](#)  
[www.sarlesrealty.com](http://www.sarlesrealty.com)