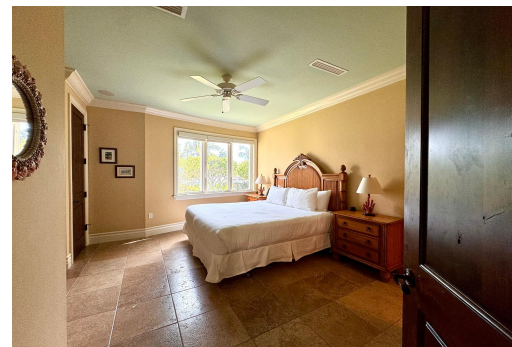


VILLA 3102, GRAND ISLE, Emerald Bay, Exuma & Exuma



Welcome to Villa 3102, located centrally in the Grand Isle complex, with views of the beautiful...

Welcome to Villa 3102, located centrally in the Grand Isle complex, with views of the beautiful Emerald bay from the master bed and upstairs kitchen and living room. Featuring many of the creature comforts you would expect in a home away from home, a washer/dryer, subzero refrigerator, oven and range, Grand Isle Villas are ready to host your much needed vacations. Priced to sell, this Villa is ready for new owners to enact their personal touches. Located 15 minutes from the international airport with daily flights from major US cities and Nassau, Grand Isle is the perfect place to unwind. All aspects of the property are managed by the onsite team, including security, landscaping, maintenance, accounts and reservations....read more on our website.

Bedrooms: 2
Bathrooms: 2
Lot Size: 2315
Subdivision: Emerald Bay
Features: 24 Hour Security, Additional Accom., Adult Oriented, Can Be Rented, Central location, Easy Access, Family Oriented, Furnished, Gated Community, Golf Course Nearby, Highway Access, Hurricane Windows, Impact Windows, Jetted Bathtub, Landscaped, Marina Nearby, Night Security, No Thru Road, Recreation Nearby, Road - Paved, Seniors Oriented, Shopping Nearby, Sidewalk, Underground Services,

VILLA 3102, GRAND ISLE,
Emerald Bay, Exuma &
Exuma Cays
Phone:



\$755.000 ID# M60173 [View Online](#)
www.sarlesrealty.com