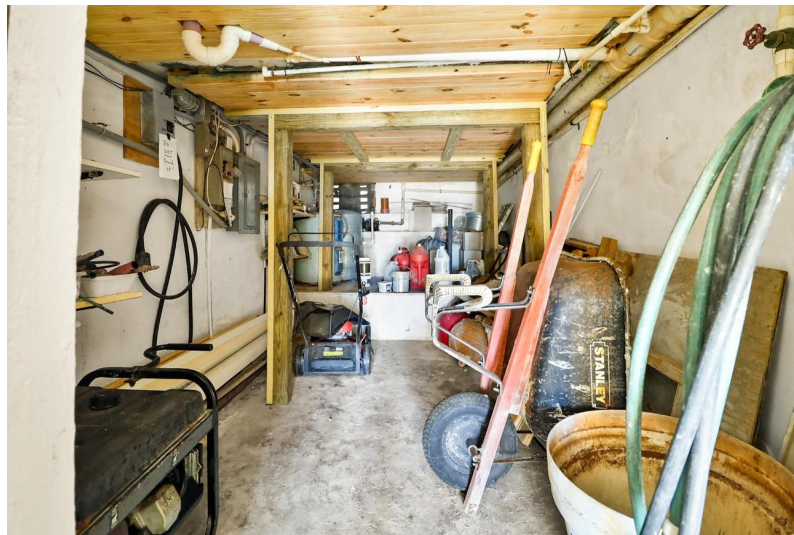
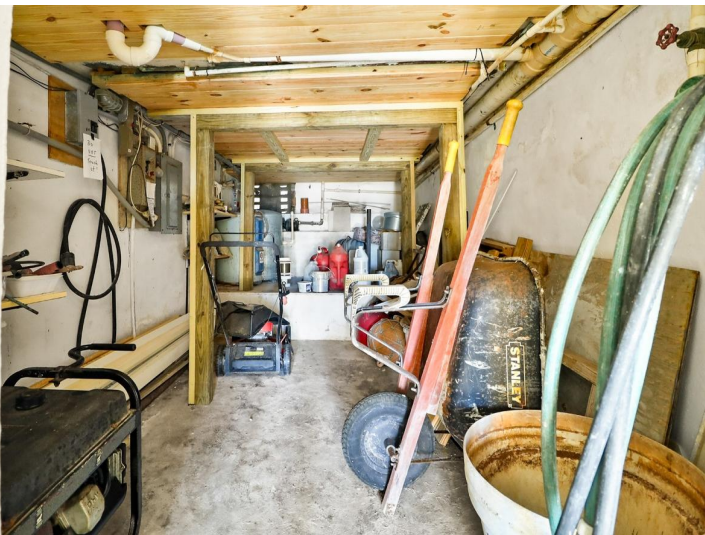


THE SEASIDE, LOT 41, Governor's Harbour, Eleuthera



Directly facing the brilliant blue turquoise of the Caribbean or the south side of the island, and...

Directly facing the brilliant blue turquoise of the Caribbean or the south side of the island, and just a few steps from the calm waters, is the beautiful home known as The Seaside. A very well-constructed concrete structure of 2 bedrooms and 2 bathrooms with a Mediterranean flair, Seaside is a very light and airy home of 1700 sq ft with big sea views throughout the house and maintained carefully and with love. Next to the well-appointed kitchen- with a new dishwasher and refrigerator- is found a large pantry. Efficiency and comfort are reflected in the great room facing the ocean, which has a spacious area for watching TV, and a separate dining room, also facing the ocean. There is also extra space, which can be used for an office area or even another bedroom. Seaside also offers a genera...read more on our website.

Bedrooms: 2
Bathrooms: 2
Lot Size: 7405
Subdivision: Governor's Harbour
Features: Family Oriented, Highway Access, Impact Shutters, Pets Allowed, Quiet Area, Road - Paved, Stand-by Generator, View - Ocean

THE SEASIDE, LOT 41,
Governor's Harbour,
Eleuthera
Phone:



\$570.000 ID# M60195 [View Online](#)
www.sarlesrealty.com