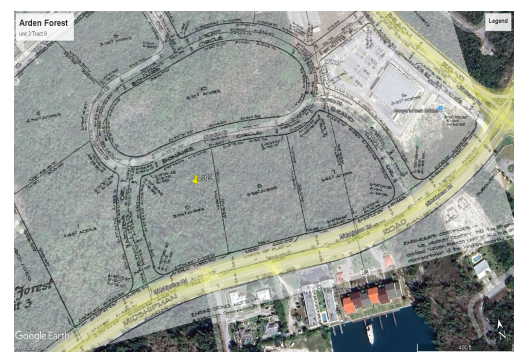
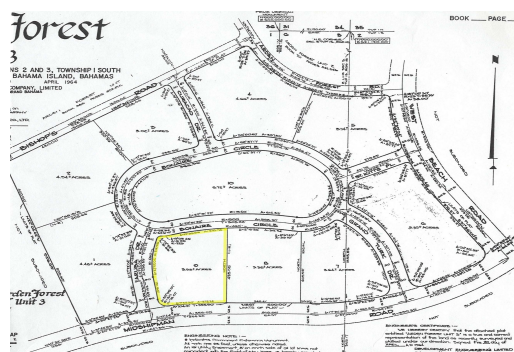


# Prime Commercial Opportunity In Arden Forest



**Located on the highly sought-after Midshipman Road, this expansive 4.68-acre property offers...**

Located on the highly sought-after Midshipman Road, this expansive 4.68-acre property offers endless potential for commercial development. Nestled in the heart of Arden Forest, this property combines strategic location, ample space, and zoning versatility, making it ideal for businesses seeking growth or investors looking for their next opportunity.

**Key Features:**

**Zoned Commercial:** Perfect for retail, office spaces, or mixed-use development.

**Expansive Lot Size:** 4.68 acres provide flexibility for large-scale projects.

**Exceptional Location:** Situated in the thriving Arden Forest community with excellent visibility and access.

Fu...read more on our website.

Living Area: 4.68  
Subdivision: Arden Forest  
Features: Acreage



James Sarles

Phone: (242) 727-8888  
jamesarlesrealty@gmail.com



**\$1.282,000 ID# 17034** [View Online](#)  
**[www.sarlesrealty.com](http://www.sarlesrealty.com)**