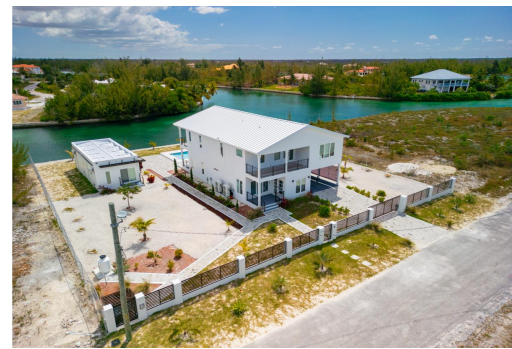


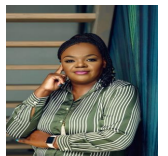
52 Conifer Close



Nestled inside the extensive Grand Lucayan Waterway, our flagship development in Pine Bay is full...

Nestled inside the extensive Grand Lucayan Waterway, our flagship development in Pine Bay is full of intrigue and ingenuity. Below you can see both conceptual renderings and site progress photos showing off what's possible with careful attention to detail and precision in design. The primary residence boasts 4577 square feet, while the Casita house includes a modest but thoughtful footprint of 640 square feet. Both properties are built with the true fit and finish, including quartz countertops, stainless steel appliances, upgraded lighting, weather-resistant windows, and smart home technology. Our designs are modern but rooted in the heart of Caribbean architecture and culture with an intention for livable space both ...read more on our website.

Bedrooms: 4
Bathrooms: 3.5
Lot Size: 18,750 sq ft
Living Area: 4577
Maint. Fees: -
Subdivision: Pine Bay
Features: Canal Front,
Dock, Furnished, Ocean
front, Pool



Shelly Gardiner

Phone:

gardinershelly@gmail.com



\$6.000 ID# R52673 [View Online](#)
www.sarlesrealty.com