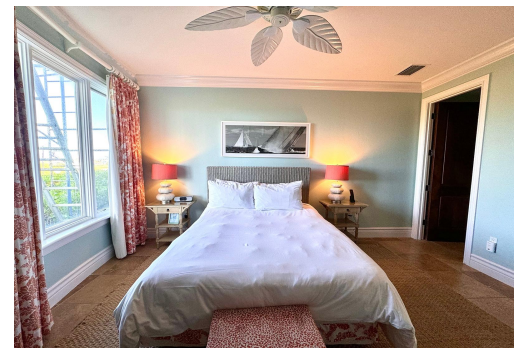
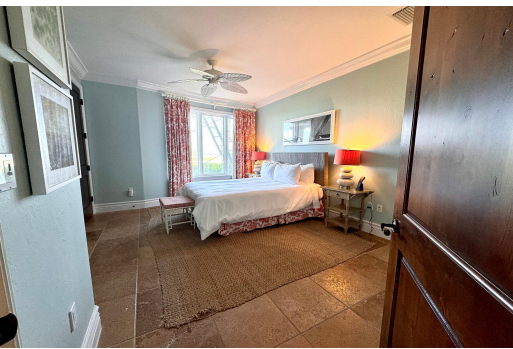


# 9102, GRAND ISLE RE, Emerald Bay, Exuma &#038; Exuma



## Villa 9102, located in newly repainted building 9 at Grand Isle offers unobstructed views of..

Villa 9102, located in newly repainted building 9 at Grand Isle offers unobstructed views of Emerald Bay Marina and the deep blues of the Exuma Sound. Facing North this Villa offers seasonal sunrise and sunset views from its covered patio. Featuring top notch kitchen appliances, washer/dryer in Villa, and recent interior painting, Villa 9102 is ready for its new owners next adventure. Located 15 minutes from the international airport with daily flights from major US cities and Nassau, Grand Isle is the perfect place to unwind. All aspects of the property are managed by the onsite team, including security, landscaping, maintenance, accounts and reservations....read more on our website.

Bedrooms: 2  
Bathrooms: 2  
Lot Size: 2315  
Subdivision: Emerald Bay  
Features: 24 Hour Security, Additional Accom., Adult Oriented, Can Be Rented, Central location, Easy Access, Family Oriented, Gated Community, Golf Course Nearby, Highway Access, Hurricane Windows, Impact Windows, Jetted Bathtub, Marina Nearby, Night Security, No Thru Road, Recreation Nearby, Road - Paved, Seniors Oriented, Shopping Nearby, Sidewalk, Underground Services, View - Ocean

VILLA 9102, GRAND ISLE RE,  
Emerald Bay, Exuma &#038;  
Exuma Cays  
Phone:



**\$825,000 ID# M60175 [View Online](#)**  
[www.sarlesrealty.com](http://www.sarlesrealty.com)