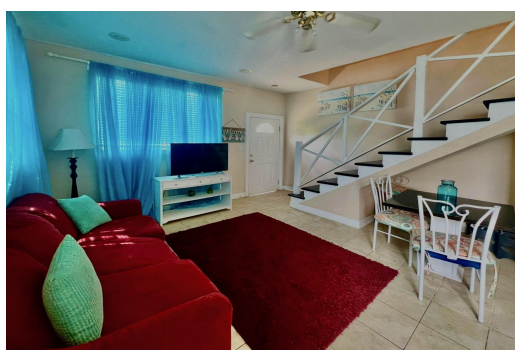
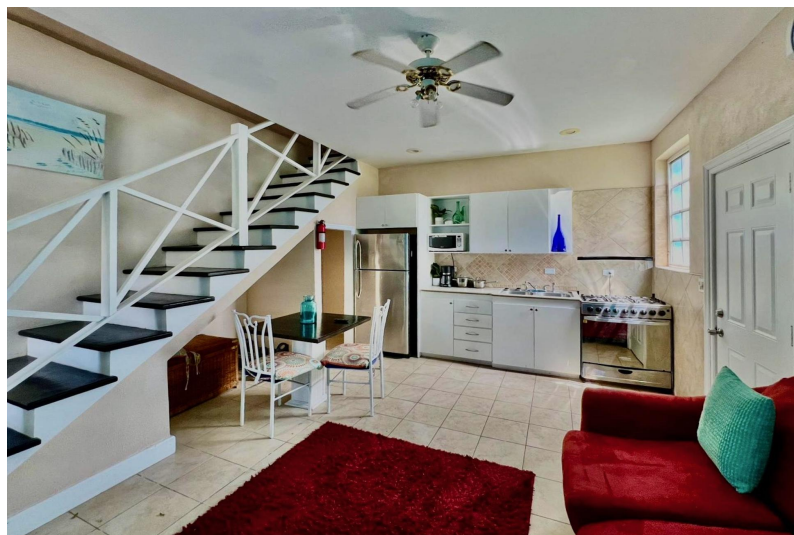


17 DOUGLAS ROAD, West Bay Street, New Providence/Paradise



Welcome to your dream rental in the heart of Tropical Gardens, Nassau! Nestled in the prestigious...

Welcome to your dream rental in the heart of Tropical Gardens, Nassau! Nestled in the prestigious western district of the Bahamas, this exquisite townhouse offers the perfect blend of luxury, comfort, and convenience. Just minutes away from the pristine beaches, you'll enjoy easy access to sun-soaked shores and turquoise waters. The property is strategically located close to the Lynden Pindling International Airport, making travel a breeze. Indulge in the vibrant culinary scene with the best local restaurants and gourmet dining just around the corner. Families will appreciate the proximity to highly-rated grade schools and a variety of affluent destinations, ensuring a lifestyle of convenience and elegance. This is more than just a rental; it's a lifestyle choice. Whether you're seeking...read more on our website.

Bedrooms: 1
Bathrooms: 1
Lot Size: 0
Subdivision: West Bay Street
Features: Easy Access,
Family Oriented,
Landscaped, None, Road
- Paved

17 DOUGLAS ROAD, West Bay Street, New Providence/Paradise Island
Phone:



\$2,100 ID# M60168 [View Online](#)
www.sarlesrealty.com