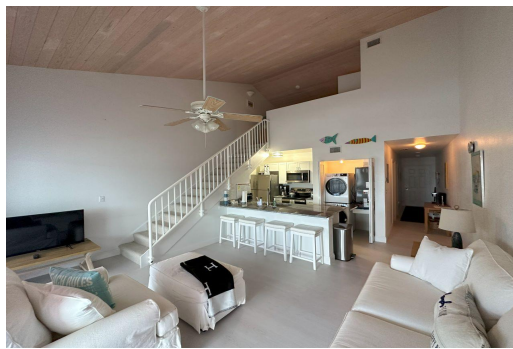


# BIMINI COVE, South Bimini, Bimini



## Unit 20E is located in the quiet and quaint resort community of Bimini Cove, on South Bimini. It is...

Unit 20E is located in the quiet and quaint resort community of Bimini Cove, on South Bimini. It is a 990 sq. ft. turn-key condominium with both marina and ocean views. This unit offers the best of both worlds for a condo. Just a short walk to the best white, sandy beaches of Bimini. Spend your evenings on the veranda watching the golden sunsets dancing over the turquoise waters of Bimini. This condominium has a very spacious configuration with an open floor concept, flowing from the entrance of the condo directly to the balcony. This condo has one full bedroom with an ensuite bathroom and a loft with a bathroom. This unit is perfectly priced for sale. It is a short golf cart ride from the South Bimini International Airport and the ferry dock between North and South Bimini. The natural lig...read more on our website.

Bedrooms: 1  
Bathrooms: 2  
Lot Size: 0  
Subdivision: South Bimini  
Features: 24 Hour Security, Adult Oriented, Cable, Can Be Rented, Canal Front, Easy Access, Family Oriented, Fully Fenced, Furnished, Impact Shutters, Marina Nearby, Night Security, Recreation Nearby, Road - Gravel, Swimming Pool

BIMINI COVE, South Bimini,  
Bimini  
Phone:



**\$280,000 ID# M60139** [View Online](#)  
[www.sarlesrealty.com](http://www.sarlesrealty.com)