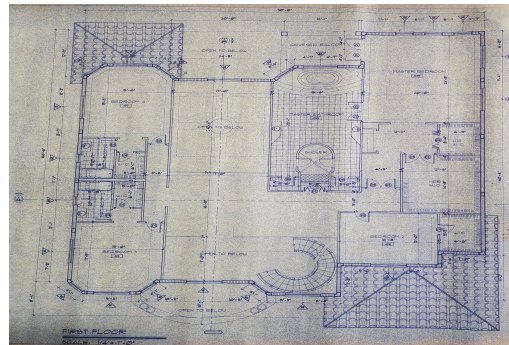
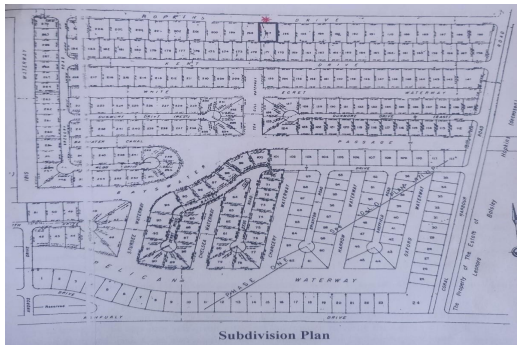
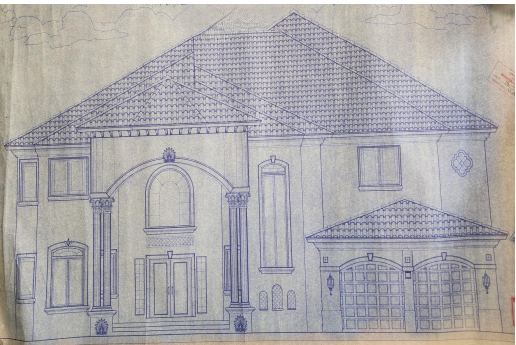
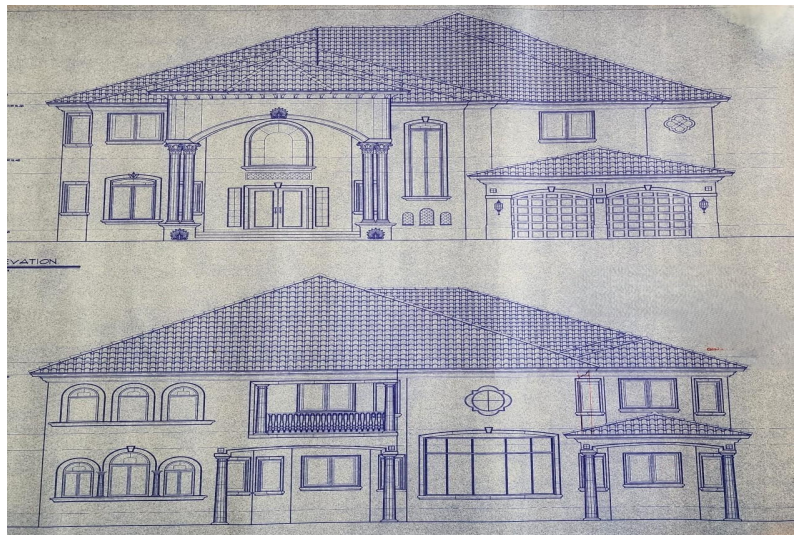
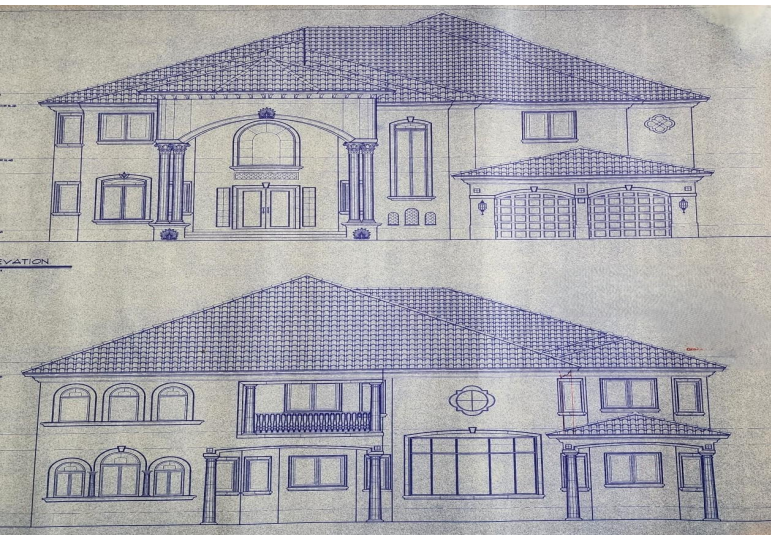


HOPKINS DRIVE CORAL HARBO, Coral Harbour, New Providence/Paradise Island



Discover the potential of this spacious vacant lot measuring 90x135 feet, conveniently located...

Discover the potential of this spacious vacant lot measuring 90x135 feet, conveniently located near the canal—ideal for avid boaters and water enthusiasts. This property boasts a partial foundation that was Ministry of Works approved at the foundation stage approximately 10 years ago, providing a head start on your dream home construction. The sale includes approved plans (about a \$10k savings) for an impressive 5-bedroom, 3.5-bathroom residence designed for modern living. The plans feature a luxurious master suite, a family room, gym, living and dining areas, a media room, utility room, bar, and a double car garage. With ample space and thoughtful design, this property offers a fantastic opportunity to create a stunning home in a prime location. Don't miss this chance to build your dream home...read more on our website.

- Bedrooms: 5
- Bathrooms: 3
- Lot Size: 121250
- Subdivision: Coral Harbour
- Features: Adult Oriented, Easy Access, Level Lot, Marina Nearby, None, Quiet Area, Recreation Nearby, Seniors Oriented

HOPKINS DRIVE CORAL HARBO, Coral Harbour, New Providence/Paradise Island

Phone:



\$165,000 ID# M60127 [View Online](#)
www.sarlesrealty.com