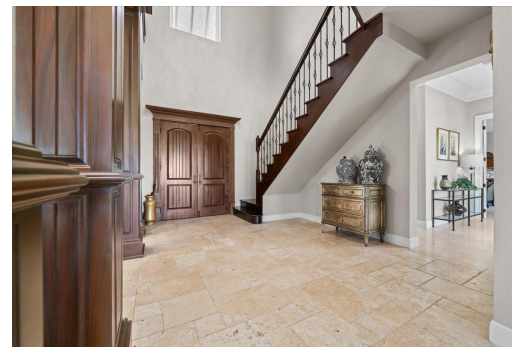


BOUR WAY DRIVE, Paradise Island, New Providence/Paradise



Nestled on the second hole of the prestigious Ocean Club Golf Course, this stunning home offers...

Nestled on the second hole of the prestigious Ocean Club Golf Course, this stunning home offers breathtaking views. Enjoy the convenience of a short two-minute golf cart ride to the Clubhouse, perfect for indulging in a round of golf, a visit to the pro shop, or a delicious meal at the on-site restaurant. As you approach the home, you'll be greeted by a lovely front courtyard, adding to the grandeur of this property. Natural light floods the spacious interior, highlighting the elegant features and finishes. Step outside to the large, covered patio overlooking the private pool, lush landscaping, and stunning golf course and lake views. With a separate family room on each level, an office, and a main bedroom suite on the first floor, this home offers much space and versatility. The large kit...read more on our website.

Bedrooms: 5
Bathrooms: 5
Lot Size: 31798
Subdivision: Paradise Island
Features: Additional Accom., Cable, Can Be Rented, Furnished, Garden Area, Gated Community, Golf Course Dev, Guest House, Impact Windows, Landscaped, Main Level Entry, Marina Nearby, Night Security, Sprinkler System, Swimming Pool

101 HARBOUR WAY DRIVE,
Paradise Island, New Providence/Paradise Island
Phone:



\$4,700,000 ID# M60130 [View Online](#)
www.sarlesrealty.com