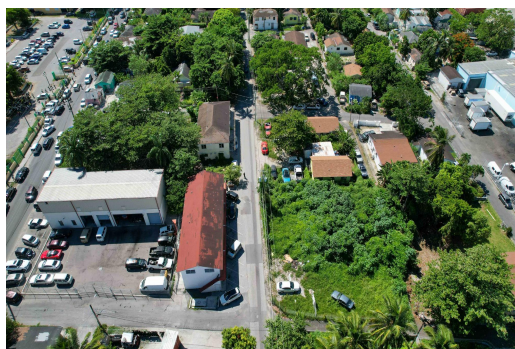
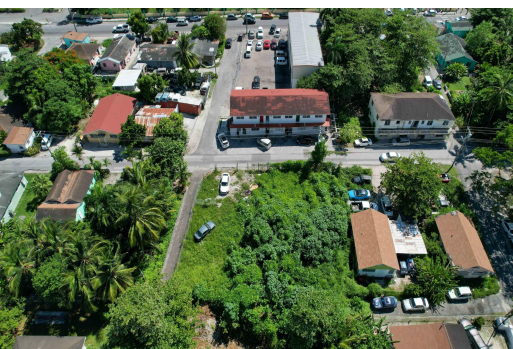


ROYAL PALM STREET, LOT 12, Palmdale, New Providence/Paradise Island



This mixed-use property is located in the heart of Palmdale, with heavy vehicular and foot traffic....

This mixed-use property is located in the heart of Palmdale, with heavy vehicular and foot traffic. The property is near to Mackey Street, schools, building supply stores, banks and pharmacies and is opposite a commercial and residential plaza. Make your offer today!...read more on our website.

Bedrooms: 0

Bathrooms: 0

Lot Size: 9600

Subdivision: Palmdale

Features: None

ROYAL PALM STREET, LOT 12,
Palmdale, New
Providence/Paradise Island
Phone:



\$120.000 ID# M60132 View Online
www.sarlesrealty.com