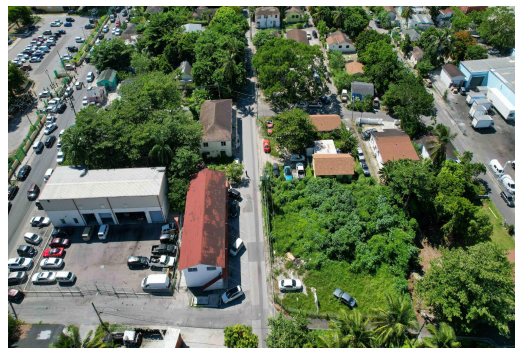
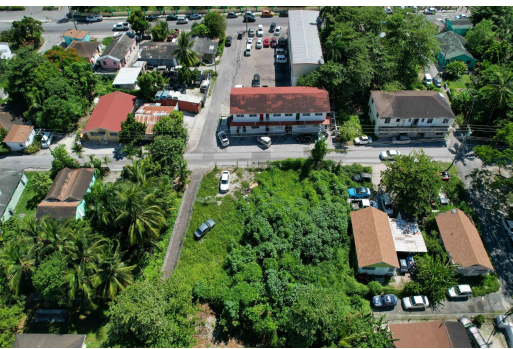


# 5 CULMERSVILLE SUBD, Palmdale, New Providence/Paradise



**This mixed-use property is located in the heart of Palmdale, with heavy vehicular and foot traffic....**

This mixed-use property is located in the heart of Palmdale, with heavy vehicular and foot traffic. The property is near to Mackey Street, schools, building supply stores, banks and pharmacies and is opposite a commercial and residential plaza. Make your offer today!...read more on our website.

Bedrooms: 0

Bathrooms: 0

Lot Size: 3831

Subdivision: Palmdale

Features: Family Oriented,

Fully Fenced, Highway

Access, Pets Allowed,

Road - Paved, Shopping

Nearby, Treed Lot

LOT 126 CULMERSVILLE SUBD,

Palmdale, New

Providence/Paradise Island

Phone:



**\$60,000 ID# M60038** [View Online](#)  
[www.sarlesrealty.com](http://www.sarlesrealty.com)