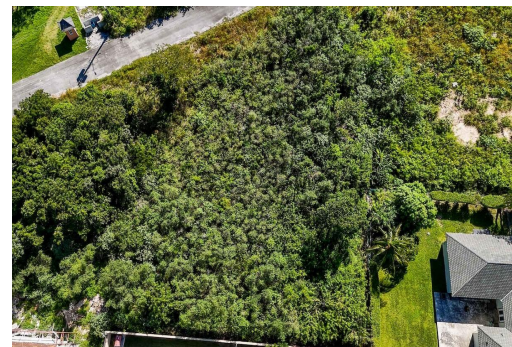
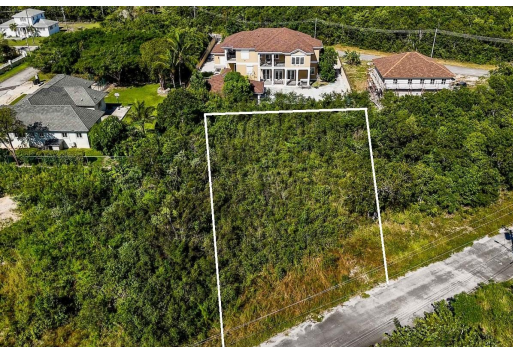


COUNTRY CLUB EST, South Ocean, New Providence/Para



Welcome to your dream opportunity in the highly sought-after Country Club Estates, located off...

Welcome to your dream opportunity in the highly sought-after Country Club Estates, located off South Ocean Boulevard in West New Providence. This expansive single-family lot offers a perfect canvas for your future home, surrounded by the beauty and tranquility of one of the most desirable neighborhoods in the area. Nestled in a serene community, this lot provides a peaceful, suburban feel with ample space for outdoor activities and entertaining. The area is known for its beautiful homes and well-maintained surroundings. This vacant lot presents an excellent investment opportunity in a growing area. Build your dream home or hold for future development—either way, this property is a smart choice. Don't miss out on this rare opportunity to secure a prime piece of real estate in Country Cl...read more on our website.

Bedrooms: 0

Bathrooms: 0

Lot Size: 19794

Subdivision: South Ocean

Features: Easy Access,

Family Oriented, Highway

Access, None, Quiet

Area, Road - Paved,

Treed Lot

LOT 25 E COUNTRY CLUB EST,

South Ocean

South Ocean, New

Providence/Paradise Island

Phone:



\$240,000 ID# M60055 [View Online](#)
www.sarlesrealty.com