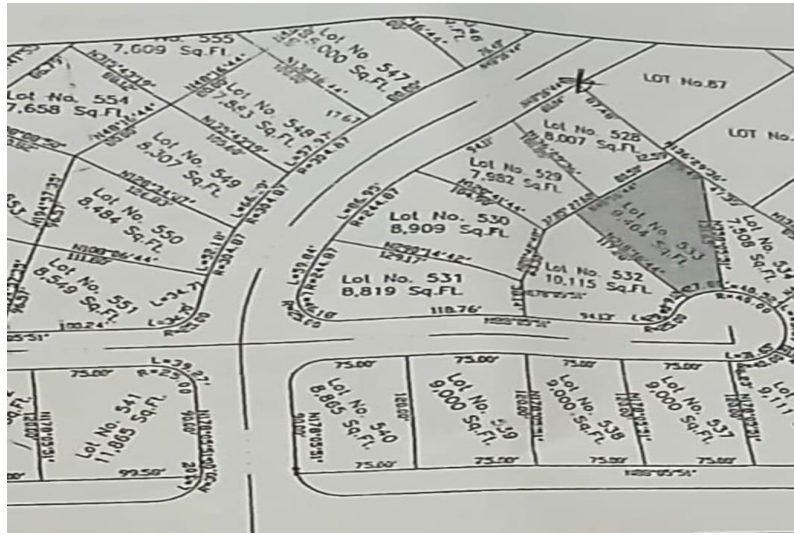
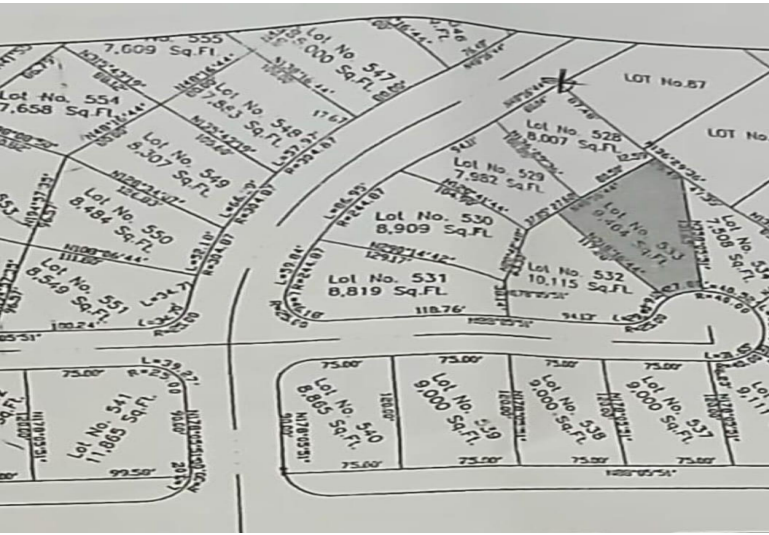


ABACO CENTRAL PINES LOT, Marsh Harbour, Abaco



Perfect 9,464 square foot property for sale at a stunning price. Central Pines is a newly developed...

Perfect 9,464 square foot property for sale at a stunning price. Central Pines is a newly developed area with brand new homes just outside of Marsh Harbour Abaco. You can build your dream home in this quiet and blissful neighborhood, which has easy access to shopping, recreation, restaurants and beaches. Call us today....read more on our website.

- Bedrooms: 0
- Bathrooms: 0
- Lot Size: 9464
- Subdivision: Marsh Harbour
- Features: Adult Oriented, Central location, Cul-de-sac, Easy Access, Family Oriented, Fuel to Lot, Highway Access, None, Pets Allowed, Phone to Lot, Potential Recreation, Quiet Area, Recreation Nearby, Road - Paved, Seniors Oriented, Shopping Nearby

ABACO CENTRAL PINES LOT,
Marsh Harbour, Abaco
Phone:



\$40,000 ID# M59830 [View Online](#)
www.sarlesrealty.com