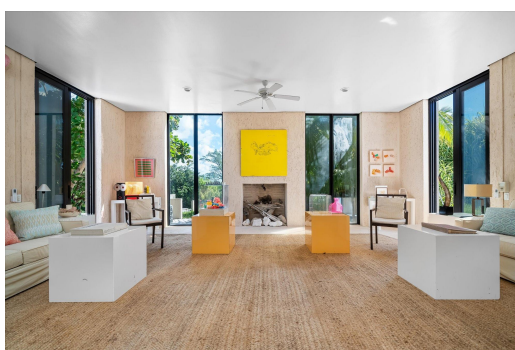


SAVANNAH HOUSE, Windermere Island, Eleuthera



Savannah House is a serene oasis on Windermere Island, Eleuthera, designed by renowned English...

Savannah House is a serene oasis on Windermere Island, Eleuthera, designed by renowned English decorator David Hicks. Constructed with storm-safe cement textured with seashells and sand, the home blends antique and modern furnishings, bold colors, and contemporary art. The grand foyer leads to a screened porch, dining area, master king-suite, double bunk-suite, and guest suite. The expansive living room, featuring sculptural artwork, opens to a kitchen with a private entrance. A detached king-suite pavilion adds extra privacy. The 4-bedroom home offers ensuite baths and a private pathway to a stunning 1.32-acre beachfront lot with 150 feet of pristine white sand. Windermere Island offers exclusivity and privacy, with easy access to Governors Harbour and nearby airports. Membership to the W...read more on our website.

Bedrooms: 4

Bathrooms: 4

Lot Size: 84071

Subdivision: Windermere Island

Features: Furnished

SAVANNAH HOUSE,
Windermere Island, Eleuthera
Phone:



\$3.795,000 ID# M59789 [View Online](#)
www.sarlesrealty.com