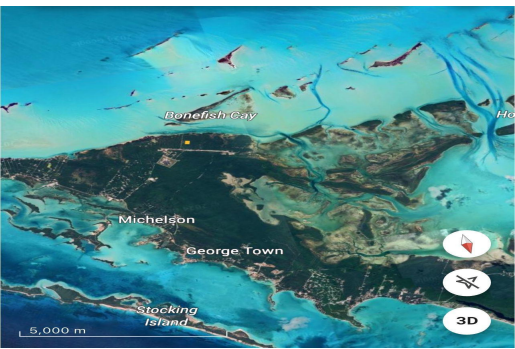


UNNAMED ROAD RESERVATION, Other Exuma, Exuma & Exuma Cays



The lot presents a great future investment for residential purposes. It is a 1½ acre, corner lot,...

The lot presents a great future investment for residential purposes. It is a 1½ acre, corner lot, located through the Old Airport Road near the old airstrip. It is about a 10-minute drive from George Town. It is centrally located to the main hub of the island where the main business offices and sandy beach access is. The International airport is about a 25-minute drive away....read more on our website.

Bedrooms: 0
 Bathrooms: 0
 Lot Size: 20000
 Subdivision: Other Exuma
 Features: None, Road - Gravel

UNNAMED ROAD
 RESERVATION, Other Exuma,
 Exuma & Exuma Cays
 Phone:



\$30,000 ID# M59679 [View Online](#)
www.sarlesrealty.com