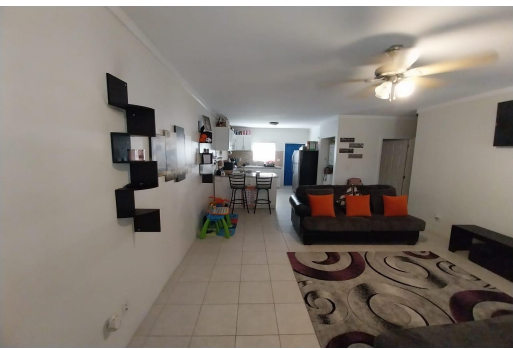
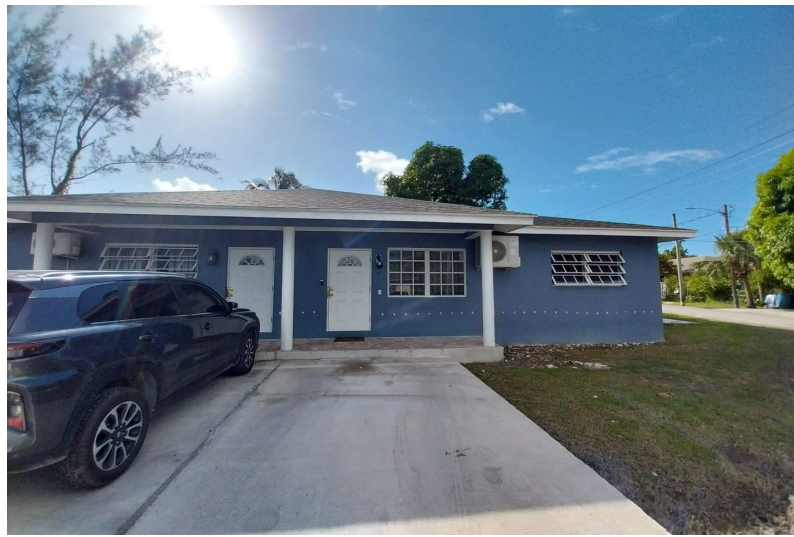


# ROSEDALE SUBDIVISION, Carmichael Road, New Providence/Paradise Island



**This beautifully renovated duplex offers a prime investment opportunity, with both units currently...**

This beautifully renovated duplex offers a prime investment opportunity, with both units currently tenant-occupied and generating \$1,200 per month each in rental income. Each spacious unit boasts 2 bedrooms and 1 bathroom, with an open-concept living and dining area perfect for modern living. Additional features include ample parking space, a major convenience in this neighborhood. Located near top-rated schools, popular businesses, parks, and recreation spots, this property is perfectly situated for both tenants and future buyers. Whether you're an investor looking for reliable rental income or a homeowner seeking to live in one unit while renting the other, this turnkey property offers both comfort and value. Don't miss out on this hassle-free, fully renovated investment!...read more on our website.

Bedrooms: 4  
Bathrooms: 2  
Lot Size: 5500  
Subdivision: Carmichael  
Road  
Features: None

ROSEDALE SUBDIVISION,  
Carmichael Road, New  
Providence/Paradise Island  
Phone:



**\$370.000 ID# M59656 [View Online](#)**  
**[www.sarlesrealty.com](http://www.sarlesrealty.com)**