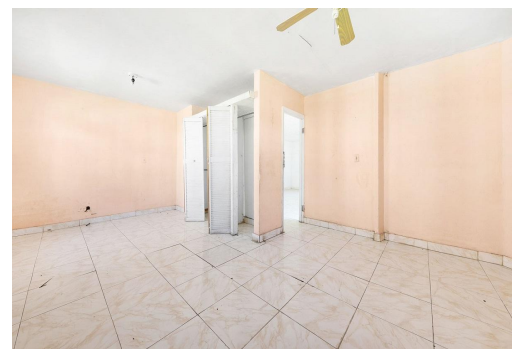
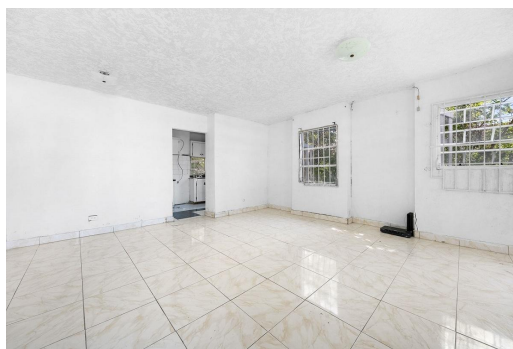


ANTIGUA STREET, Yamacraw, New Providence/Paradise Is



Located at 642 Antigua Street in Elizabeth Estates, this comfortable 3-bedroom, 2-bathroom home...

Located at 642 Antigua Street in Elizabeth Estates, this comfortable 3-bedroom, 2-bathroom home sits on a 5,000 sq. ft. lot. Great for a starter home, it offers a spacious yard with plenty of potential for outdoor activities or future expansion. Situated on the Eastern side of the island, this home provides easy access to schools and local amenities, making it a practical and affordable option for homeowners....read more on our website.

Bedrooms: 3
Bathrooms: 2
Lot Size: 5000
Subdivision: Yamacraw
Features: Family Oriented,
Fully Fenced, Furnished,
Impact Shutters, Pets
Allowed, Road - Paved,
Treed Lot

642 ANTIGUA STREET,
Yamacraw, New
Providence/Paradise Island

Phone:



\$175.000 ID# M59717 [View Online](#)
www.sarlesrealty.com