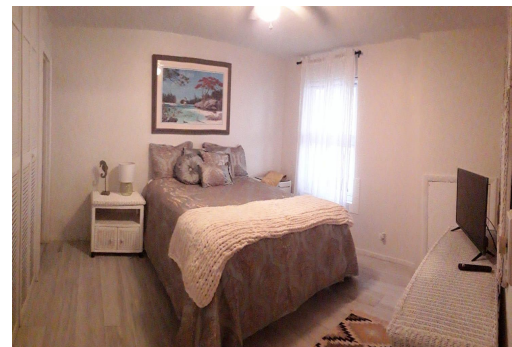


# DELAPORT POINT, West Bay Street, New Providence/Paradise Island



**Gated Community ,5th Floor unit with Ocean view ,Walking Distance to dining, shopping and...**

Gated Community ,5th Floor unit with Ocean view ,Walking Distance to dining, shopping and entertainment....read more on our website.

Bedrooms: 2

Bathrooms: 2

Lot Size: 1000

Subdivision: West Bay Street

Features: 24 Hour

Security, Beach Front,

Gated Community,

Waterfront - Ocean

DELAPORT POINT, West Bay

Street, New Providence/Paradise

Island

Phone:



**\$3.400 ID# M59444 View Online**  
**[www.sarlesrealty.com](http://www.sarlesrealty.com)**